

# PSDs and spectrograms

Tanner Prestegard

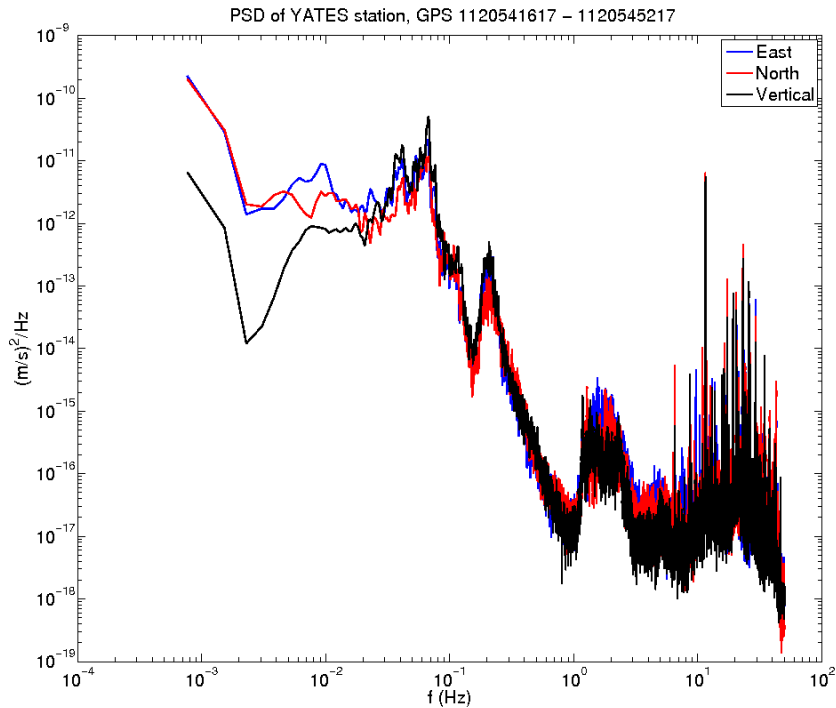
9/17/2015

# PSDs

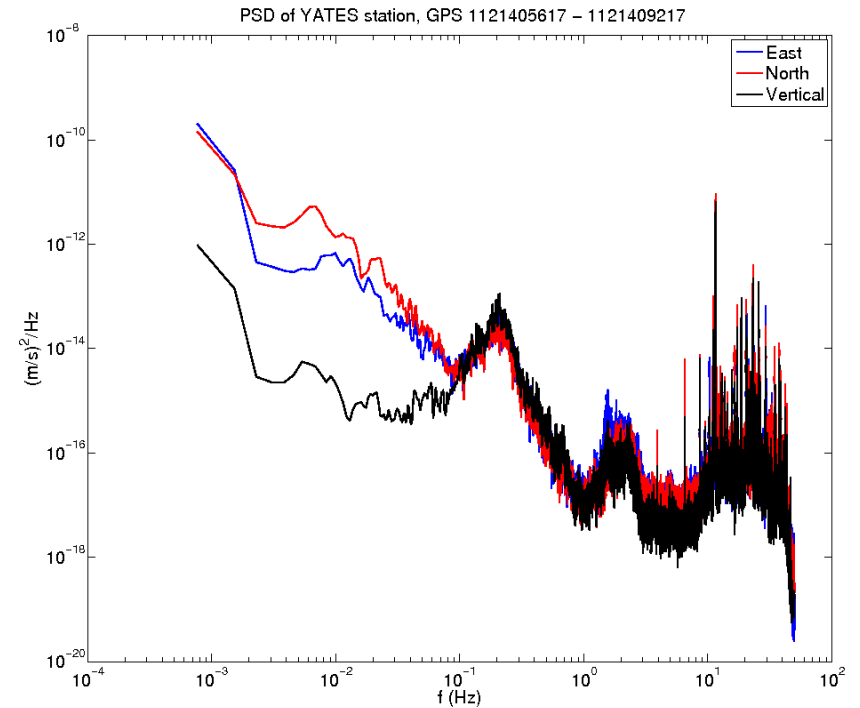
- Taking 1 hour of data in the middle of the night.
- Making PSDs with Welch's method.

# YATES

July 10, 11:30pm MDT

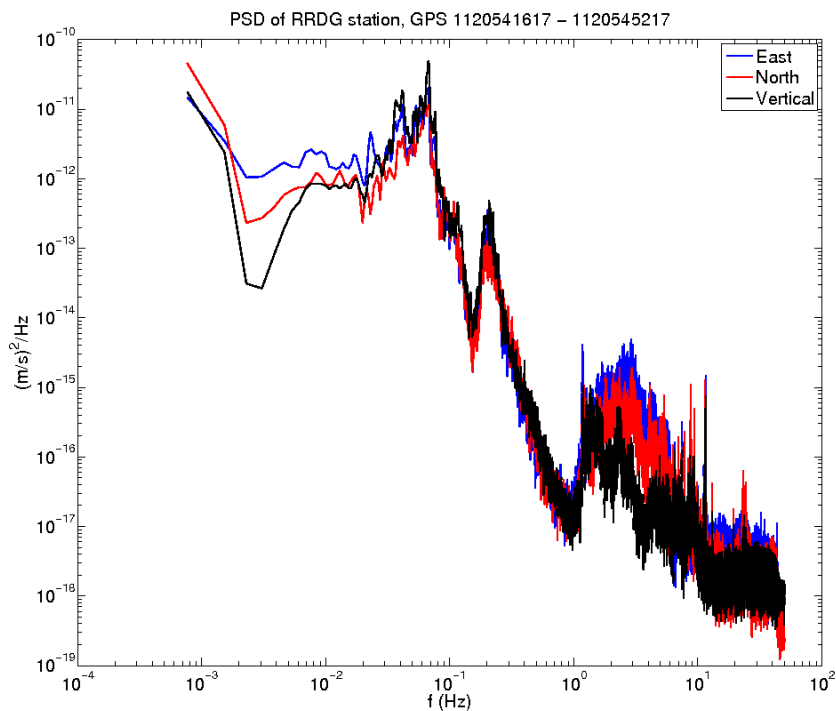


July 20, 11:30pm MDT

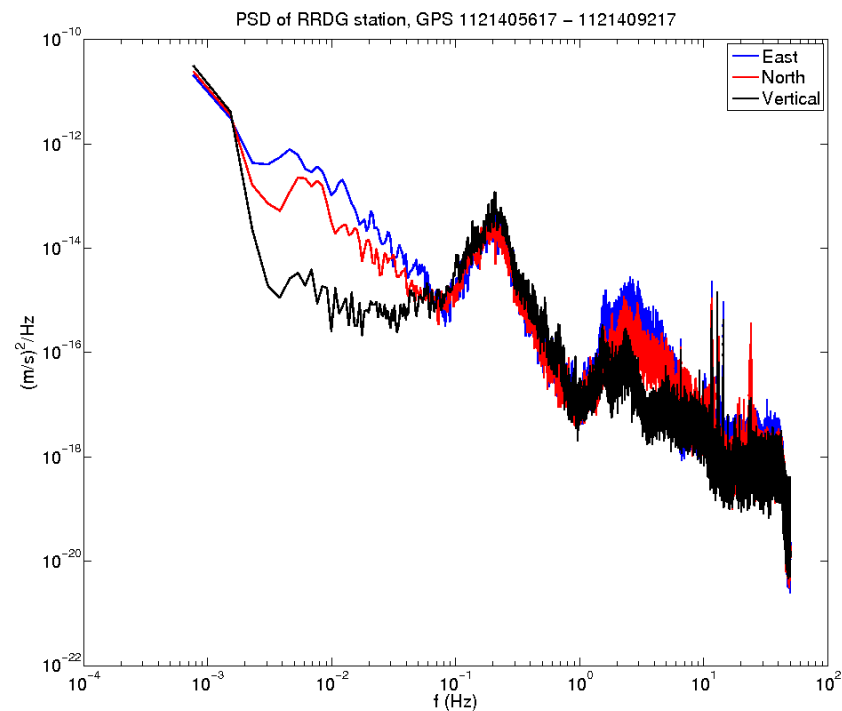


# RRDG

July 10, 11:30pm MDT

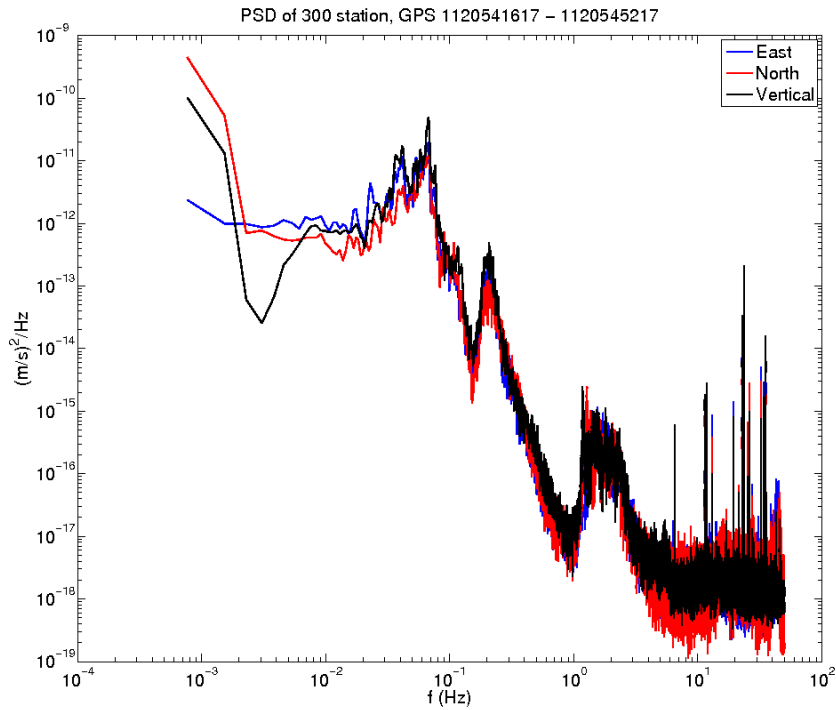


July 20, 11:30pm MDT

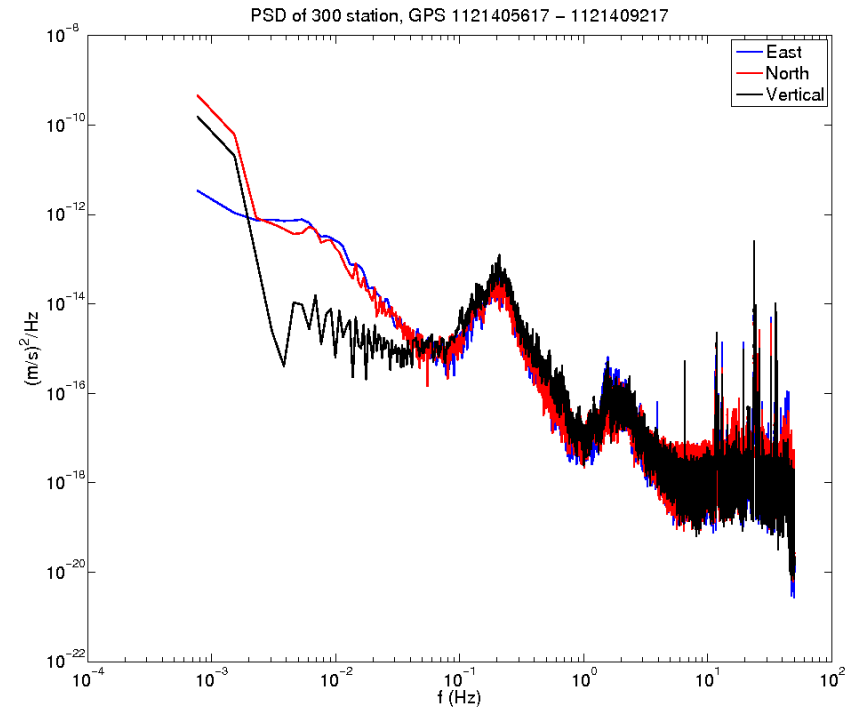


# 300

July 10, 11:30pm MDT

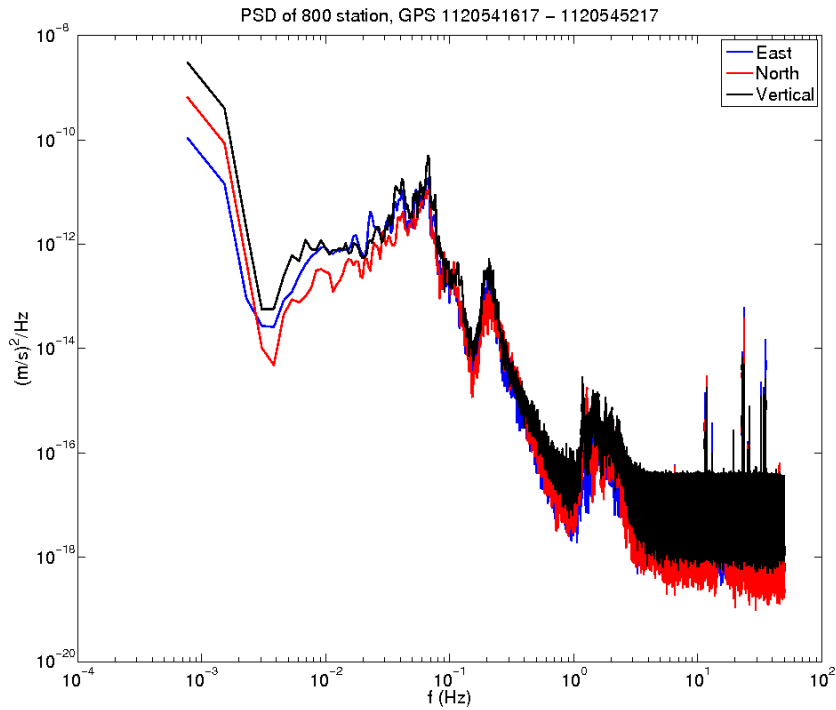


July 20, 11:30pm MDT

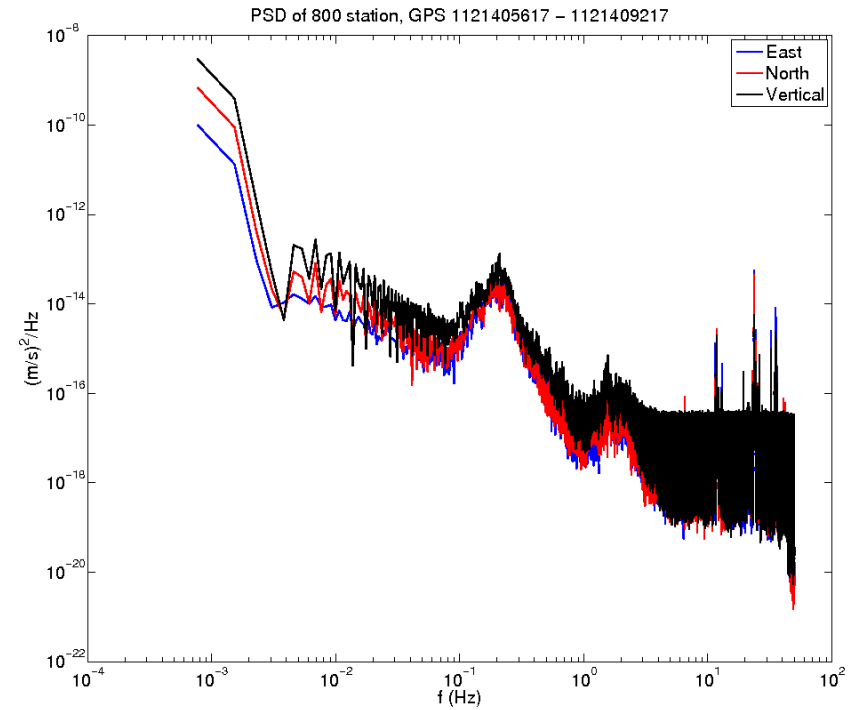


# 800

July 10, 11:30pm MDT

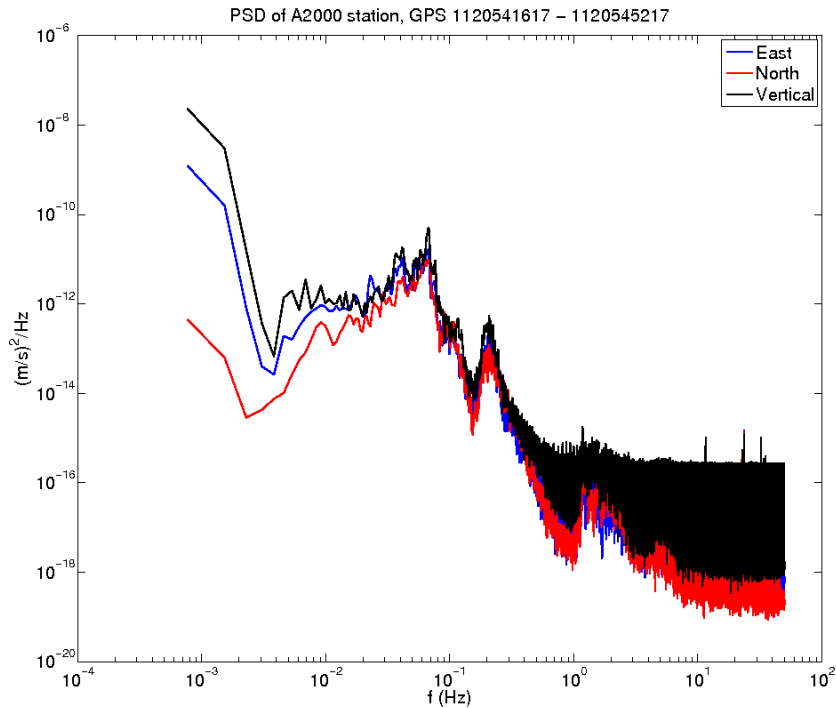


July 20, 11:30pm MDT

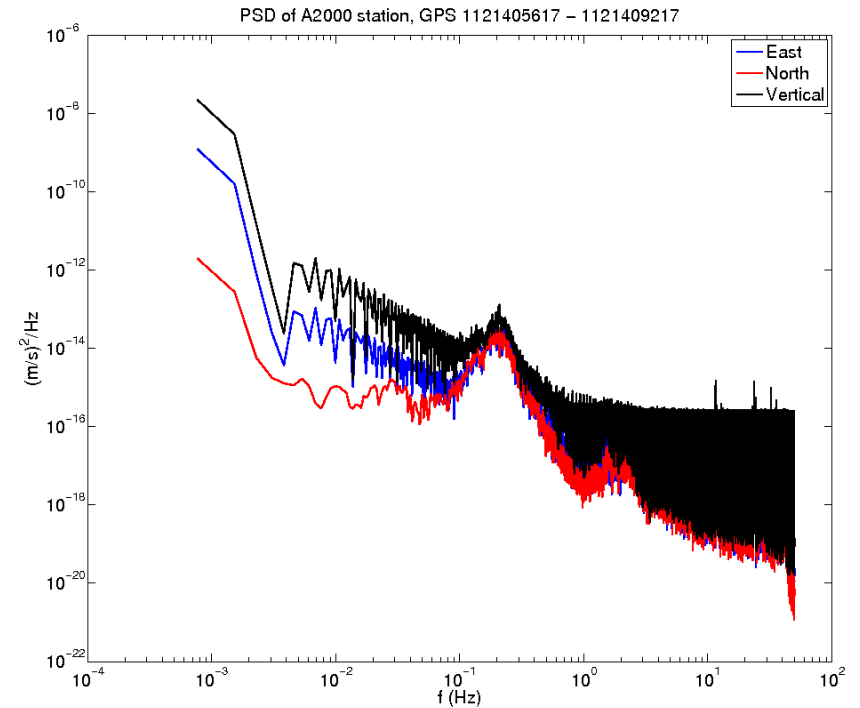


# A2000

July 10, 11:30pm MDT

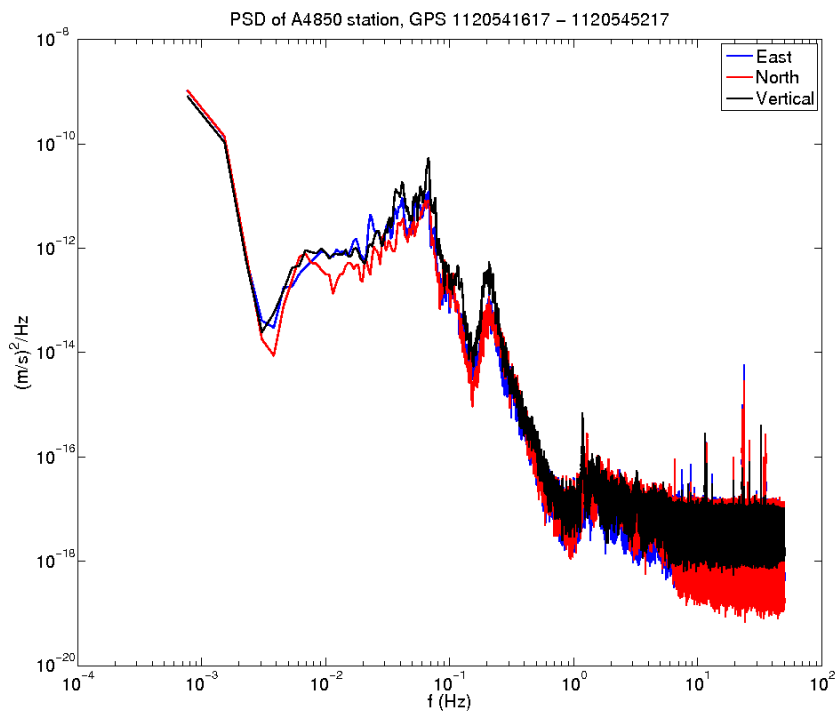


July 20, 11:30pm MDT

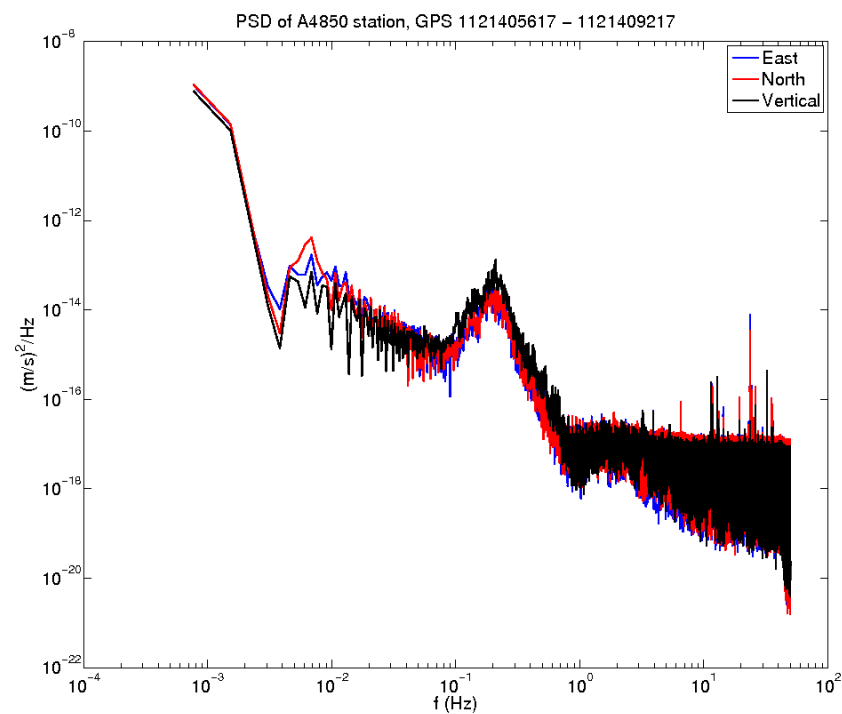


# A4850

July 10, 11:30pm MDT



July 20, 11:30pm MDT



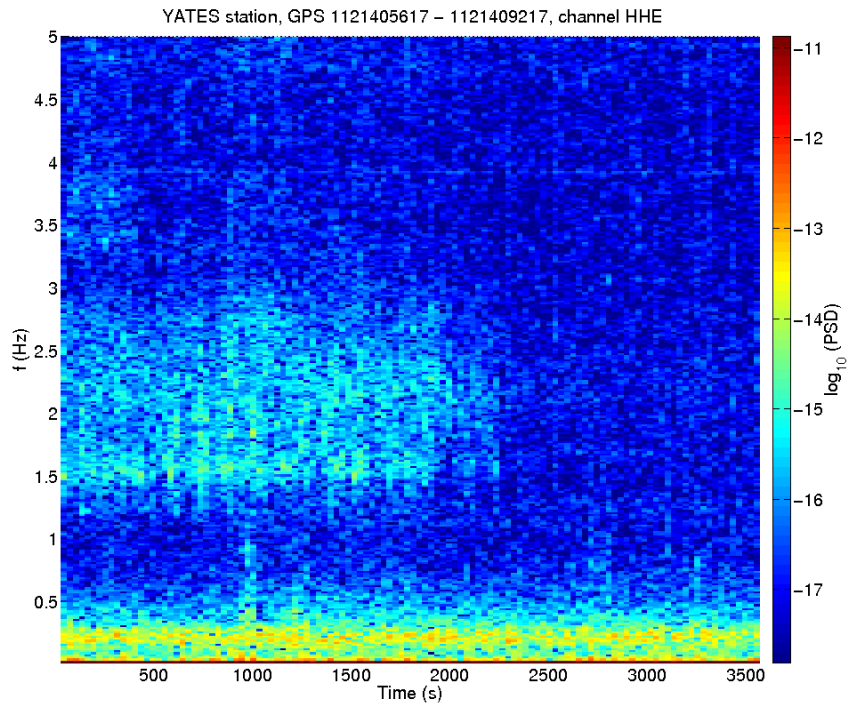


# Spectrograms

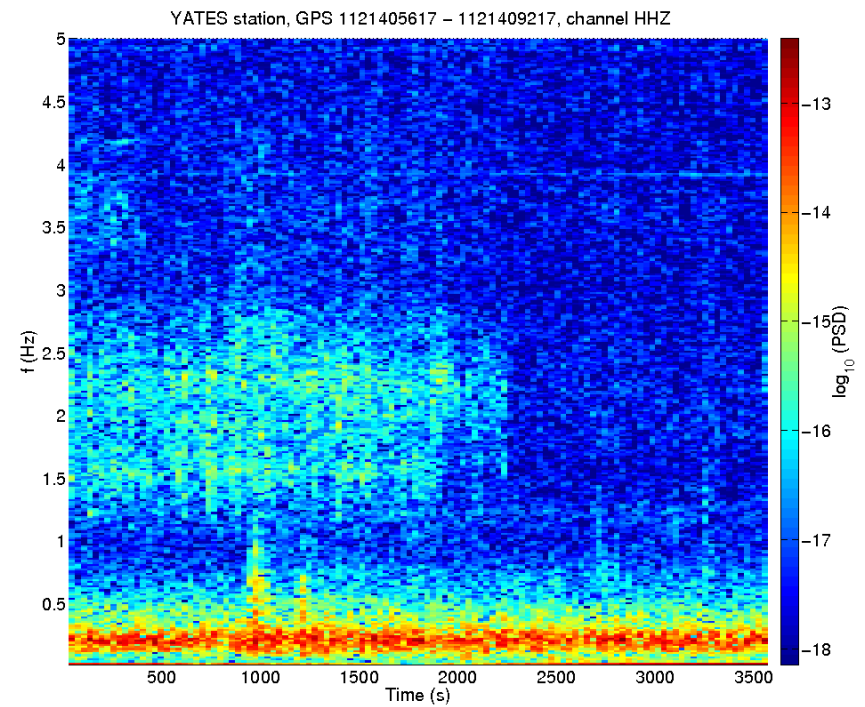
- Plots of 1 hour of data from July 20 starting at 11:30 pm MDT.
- Using 60 second time segments which are 50% overlapping, 1/60 Hz frequency resolution.

# YATES

East channel

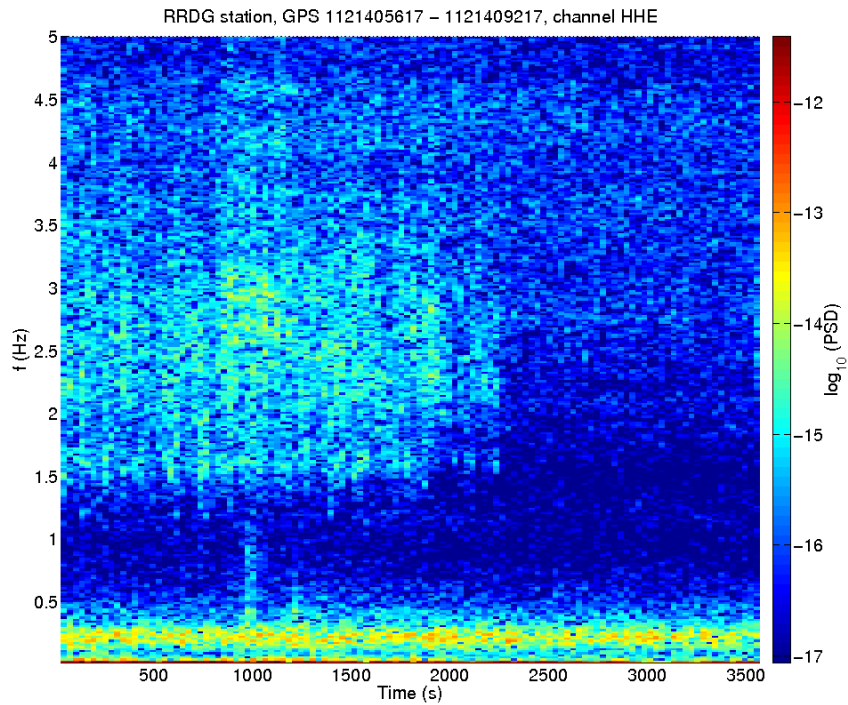


Vertical channel

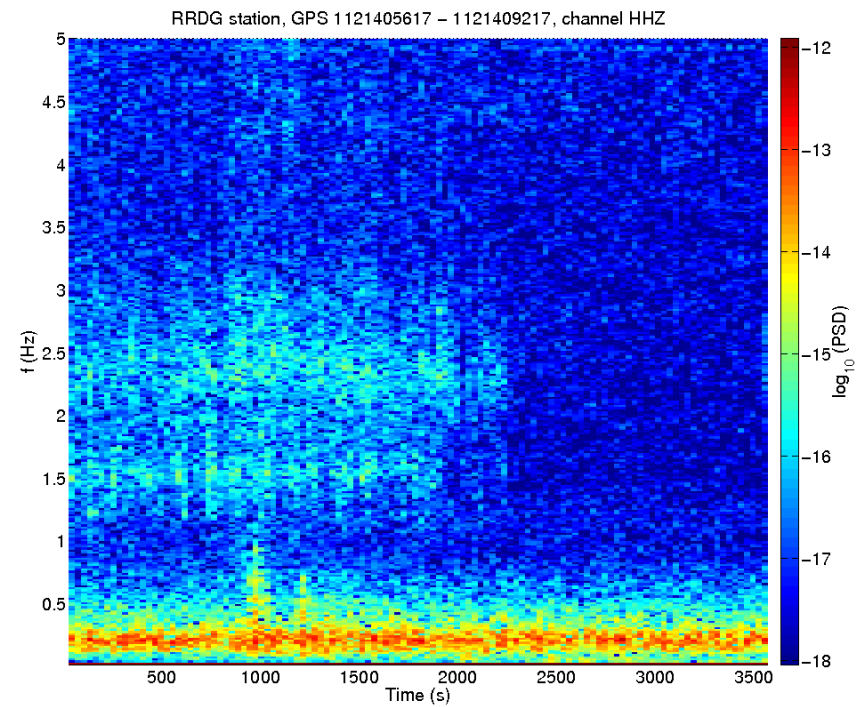


# RRDG

East channel

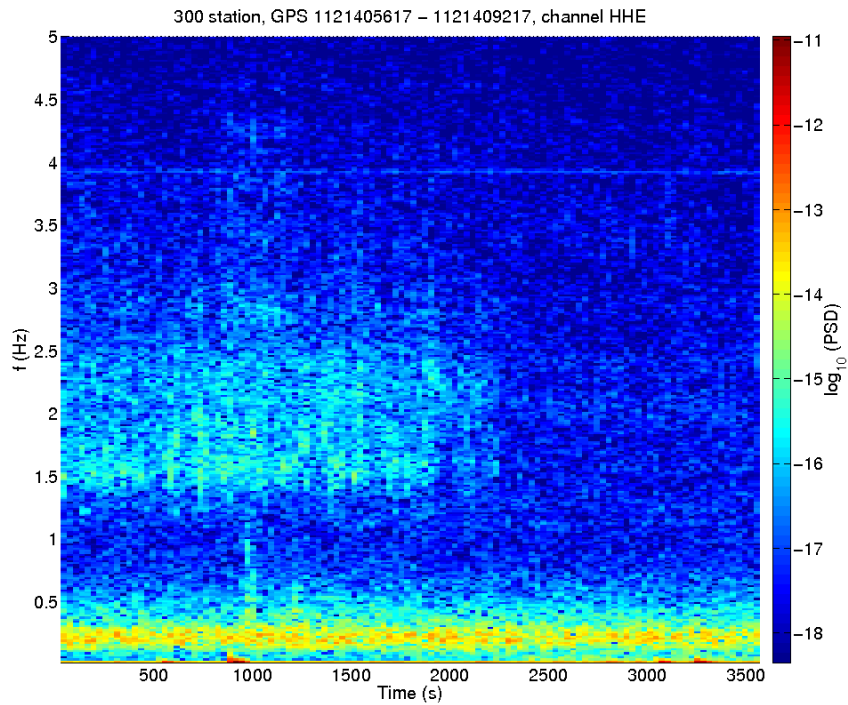


Vertical channel

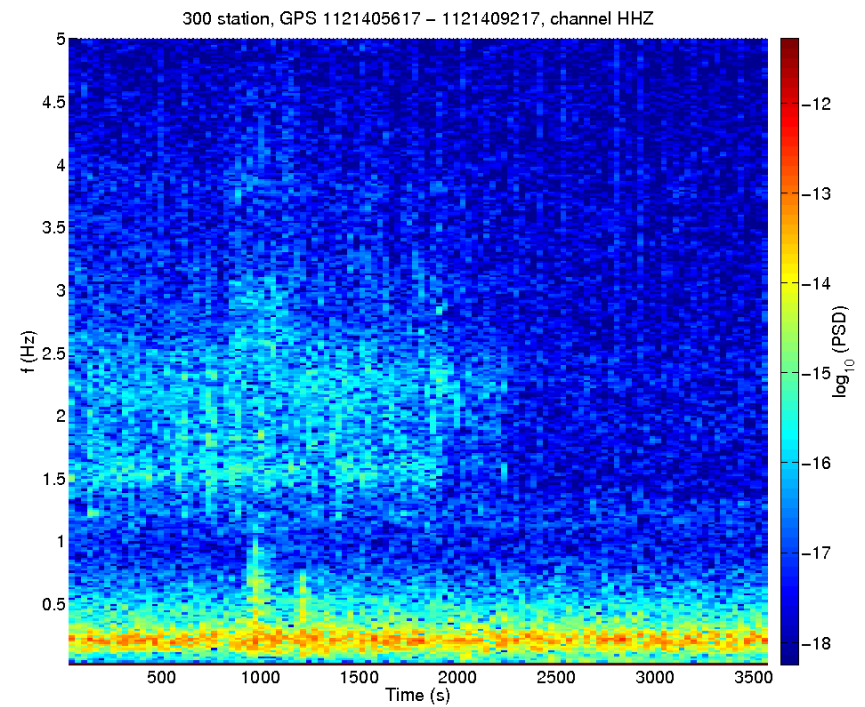


# 300

East channel

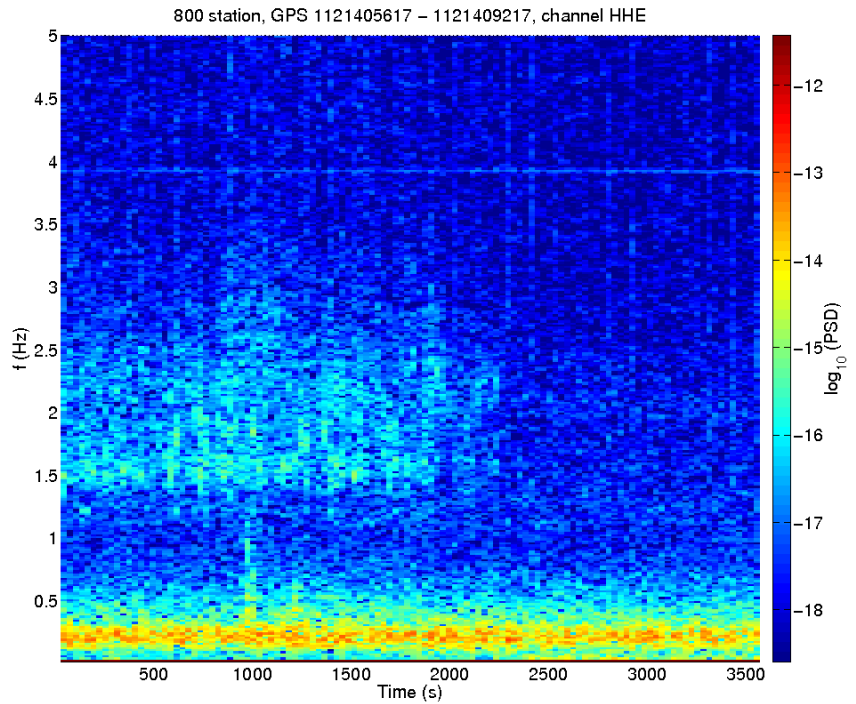


Vertical channel

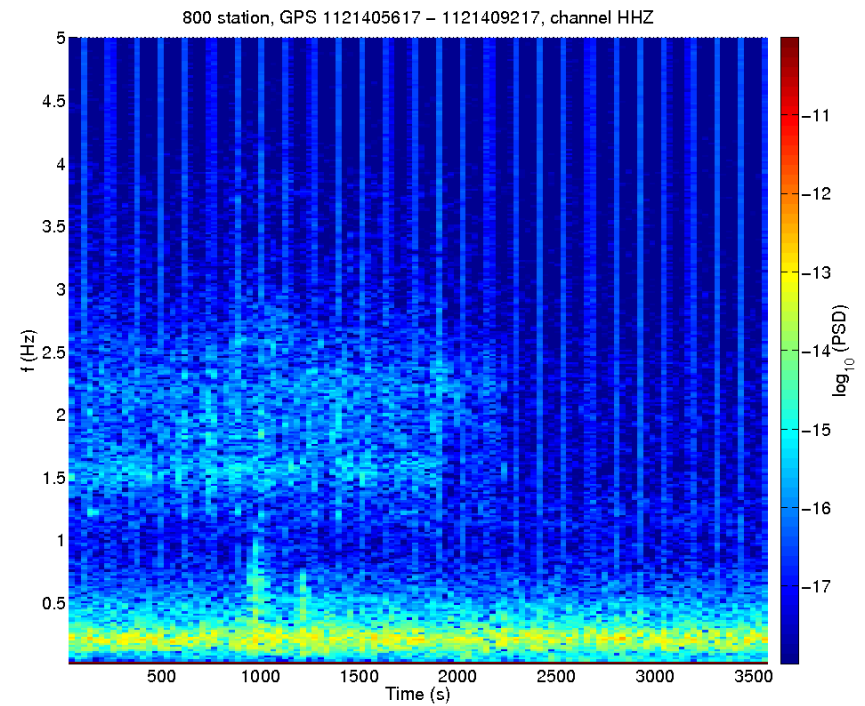


# 800

East channel

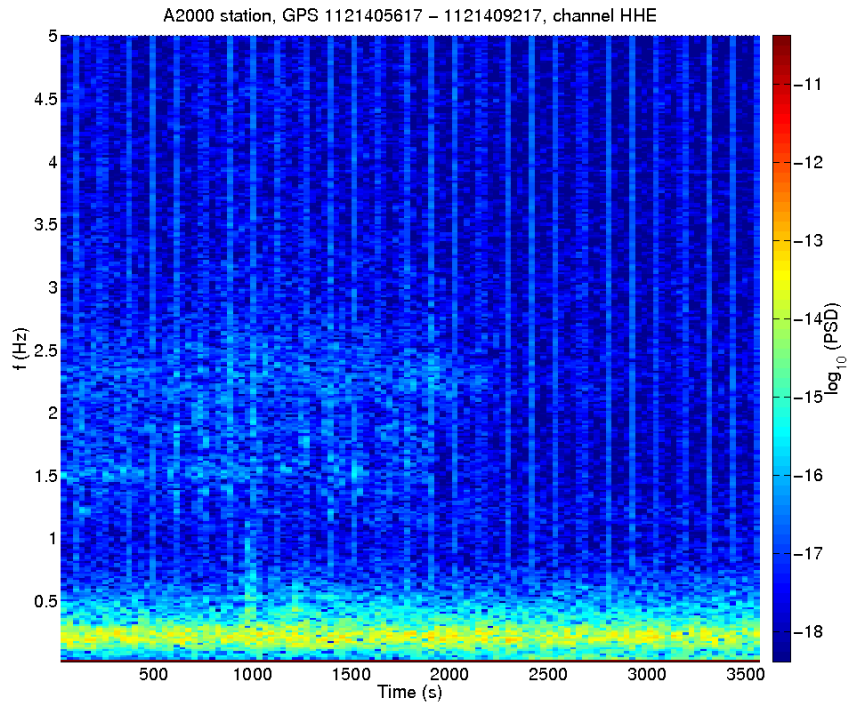


Vertical channel

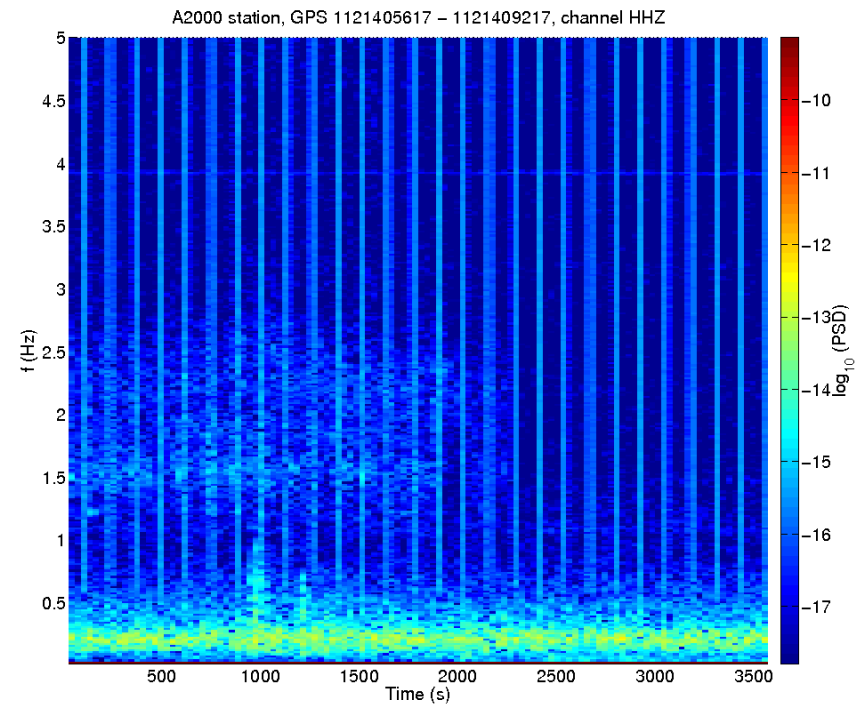


# A2000

East channel

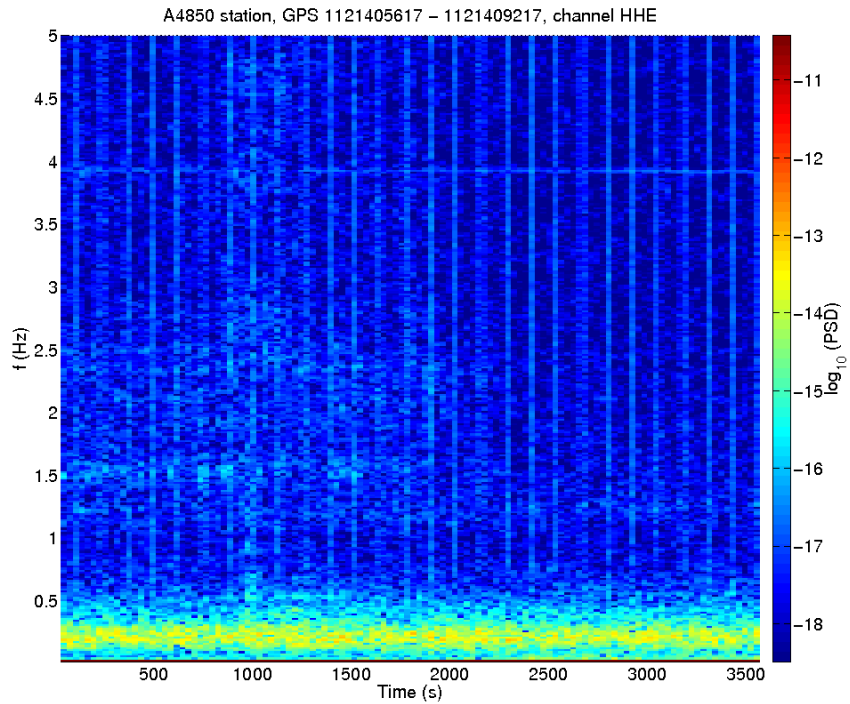


Vertical channel



# A4850

East channel



Vertical channel

