

PRODUCT GUIDE

e-STUDIO3511/4511

Making business **brighter**



TOSHIBA

PRODUCT OVERVIEW AND POSITIONING	1-2
SYSTEM CONFIGURATION	3
GENERAL FEATURES	4-6
COPIER FEATURES	7-10
NETWORK PRINTING FEATURES	11-13
NETWORK SCANNING FEATURES	14
E-FILING FEATURES	15-16
FAX FEATURES	17-18
MULTI-TASK FEATURES	19
MANAGEMENT TOOLS	20
OTHER CONVENIENT FEATURES	21
ADVANCED TECHNOLOGY	22-24
PURCHASE MOTIVATION	25
SPECIFICATIONS	26-31



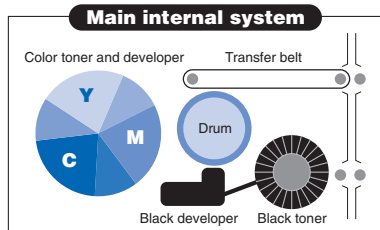
PRODUCT OVERVIEW AND POSITIONING

Introducing the ColorEnhanced e-STUDIO3511/4511 Series

Toshiba presents yet another technological breakthrough—the ColorEnhanced e-STUDIO3511/4511 Series. This impressive multifunction series offers you economy, high productivity, and high quality, just what you'd expect from Toshiba. What you might not expect is the added convenience of color – brilliant, full-color printing, copying, and scanning.

The e-STUDIO3511/4511 Series produces crisp, clear black & white output at the rate of 35 and 45 pages per minute (respectively) and eye-catching color documents at 11 pages per minute. The benefits of black & white along with color are combined to save time, money and effort while increasing the overall impact and effectiveness of documents.

The Economy of Black & White and the Impact of Color



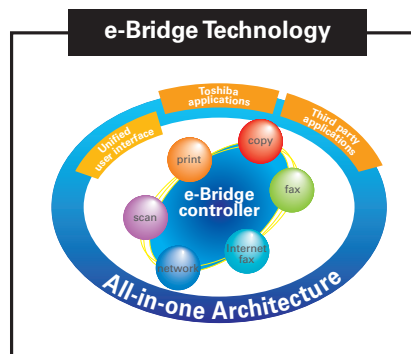
The e-STUDIO3511/4511 Series is a 1-pass monochrome and 4-pass color system that allows you to add color highlights to black & white presentations. This

convenient capability helps you create a more professional look and calls attention to important items. Now, you can take advantage of color without sacrificing multifunction features you have come to expect like copying, scanning, printing, faxing, and finishing. Best of all, you can enjoy a cost per copy for black & white printing that is consistent with the cost per copy on monochrome multifunction machines.

New, Net-ready Architecture

The e-STUDIO3511/4511 Series includes Net-ready single board architecture that incorporates Toshiba's innovative new e-Bridge technology. Out-of-the-box network connectivity combined with color and black & white copying, printing, and scanning make this new technology revolutionary.

Optional system features include walk-up fax capabilities, and wireless configurations. The e-STUDIO3511/4511 Series with unique e-Bridge technology offers cost competitiveness in networked configurations using All-In-One architecture.



PRODUCT OVERVIEW AND POSITIONING

Brilliant Technology Shared by All

More and more businesses want the added benefits of color but are concerned about the additional cost. Toshiba's ColorEnhanced printing provides an economical and timesaving alternative to buying a separate black & white machine and color printer, or using expensive outsourcing.

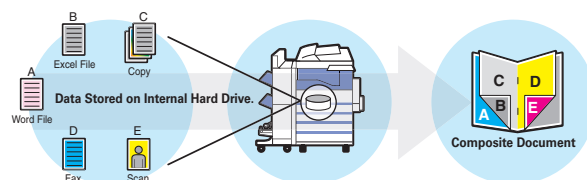
The e-STUDIO3511/4511 Series is specially designed to meet the needs of small and mid-size businesses and workgroups. This connectable black & white multifunction system is a perfect solution for creating internal communications, proposals, spreadsheets, graphs, and business presentations. The 3511/4511 Series provides you with the capabilities to produce affordable, high quality output that can work better and command more attention with highlighted color in areas that require special emphasis.

Another Strategic First from Toshiba

Toshiba's e-STUDIO3511/4511 Series incorporates innovative Net-ready single board architecture that provides "out-of-the-box" network connectivity along with complete copy, print, scan, and color capabilities. An ergonomically designed, tilting wide-touch control panel with Qwerty Key Board has large, easy-to-use buttons and is Section 508 compliant.

The e-STUDIO3511/4511 Series also utilizes standard e-Filing that allows copied, printed, faxed, and scanned documents to be merged and stored with a Web-based utility. Your business can benefit from additional productivity enhancing system features like standard Scan-to-email, Internet faxing, Scan-to-file, and optional Super Group G3 faxing.

Toshiba's first Net-ready black & white and color multifunction system offers economy, productivity, and image quality combined with convenience, versatility, and Toshiba reliability. The e-STUDIO3511/4511 features the comparable running costs, performance, and functionality of black & white multifunction systems, along with the added benefits of print, scan, fax, and full-color capabilities. In addition, the e-STUDIO3511/4511 can automatically send an email or fax concerning necessary supply orders, service calls and PM (preventative maintenance). Smaller offices, as well as larger environments with multiple workgroups, can now benefit from the economy of black & white, the impact of color, and the convenience of standard network connectivity, all in one scalable multifunction system.



All-In-One, Net-ready architecture is cost-effective, including standard color copy, print, and scan capabilities

Network connectivity is simple with a standard 10/100BaseT NIC and optional 802.11b wireless.

Internet access is fast and easy with standard Internet printing, Scan-to-email, and Internet fax.

Fast warm-up time of just 40 seconds saves valuable time using Toshiba's unique fusing technology.

Versatile finishing and booklet-making features include sheet insertion, multi-position stapling, hole punch and saddle-stitch finishing.

An innovative revolver 4-pass color development system allows for inexpensive black & white cost per copy.

Robust paper handling features include standard stackless duplexing, a large paper capacity of 3,700 sheets and up to 5 different paper sources.

A high-yield black toner cartridge saves time and money by reducing the need for replacement.

Separate black & white and color access codes help manage departmental costs.

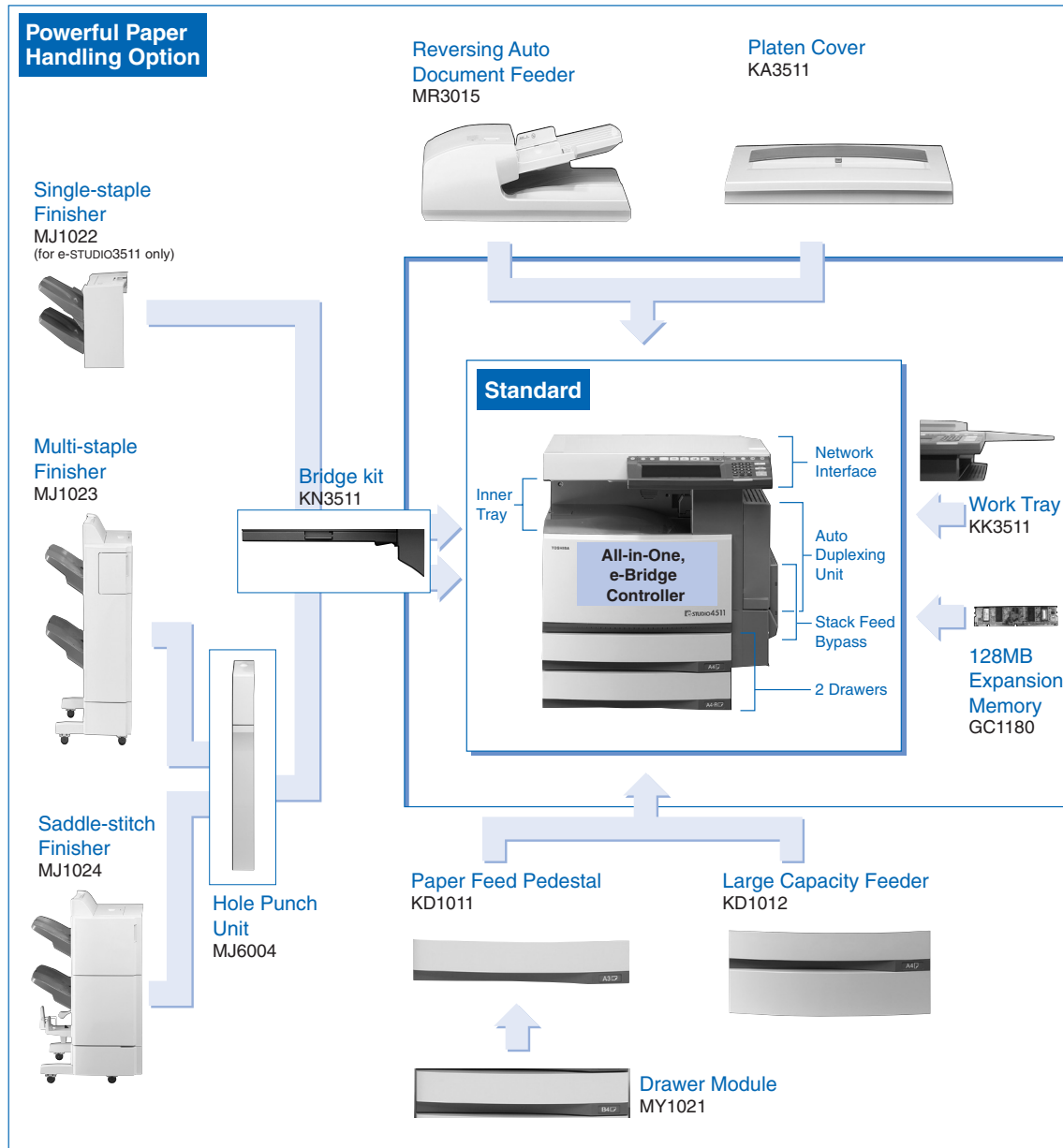
Tilting wide-touch control panel is easy to use and 508 compliant.

A stackless ADU reduces paper consumption and operating costs.

A sleek design with inner exit tray saves space.



SYSTEM CONFIGURATION



Wireless Option

Wireless LAN Adapter GN1010



Fax Option

FAX Board GD1150



FAX 2nd Line Board GD1160



Security Option

Scrambler Board GP1030



PCI Slot GO1030
(Required for the Scrambler board)



GENERAL FEATURES

POWERFUL PAPER HANDLING

Powerful paper handling features that work in conjunction with the advanced editing and finishing functions save paper and result in an increased work efficiency.

Standard Stackless Automatic Duplexing Unit (ADU)

Two-sided copies/prints are delivered quickly and easily thanks to the “stackless” type Automatic Duplexing Unit (ADU). Another benefit of the ADU is that it doesn’t take up the space of a paper feed drawer.

Standard Stack Feed Bypass (SFB)

Various types of paper, including thick paper and OHP sheets, can be fed through the Stack Feed Bypass (SFB), which provides more flexibility for copying/printing documents. The SFB has a capacity of up to 100 sheets.

Optional Sheet-through Reversing Automatic Document Feeder (RADF)

The optional Reversing Automatic Document Feeder (RADF) quickly and automatically feeds two-sided originals to reduce both labor and waiting time. The efficient design of this sheet-through type RADF provides faster productivity than an ordinary sheet-stack type RADF. The sheet-stack type RADF feeds each sheet of original separately, places it on the glass, and scans it by moving its scanner sensors. This sheet-through type RADF can feed originals without stacking the sheets on glass, because the originals are moved over the stacked scanner sensors, instead of moving the scanner sensors over the originals.

A maximum of 100 sheets of paper (from A5-R/Statement-R to A3/Ledger) can be stacked on the RADF at a time. After all are scanned, an additional 100 sheets of paper can be placed on the RADF and scanned continuously. In total, up to 1,000 images can be stored in the machine for one copy job.

The RADF operates in conjunction with various other features, including the Automatic Magnification Selection (AMS) and Automatic Paper Selection (APS). This allows users to make copies on the correct sized paper in the correct size without any manual key operations. The RADF also accepts different sized originals at the same time as a set of originals.

Maximum 3,700-sheet Paper Capacity

The optional Large Capacity Feeder (LCF) holds a maximum of 2,500 sheets of A4/Letter-sized paper. With the standard two drawers and the Stack Feed Bypass (SFB), a maximum of 3,700 sheets of paper can be loaded. Thanks to such large-capacity, paper does not need to be replenished as frequently. The LCF is a pedestal type so that it can be installed at the bottom of the machine. 2,500 sheets of paper in total can be loaded side by side. When the first half of the paper runs out, the other half of paper is shifted to the other side to be fed into the machine.

Maximum 5 Feed Paper Sources

With the optional Paper Feed Pedestal (PFP) and Drawer Module in addition to the standard two drawers and the Stack Feed Bypass (SFB), the number of paper sources available can increase to five sources, which allows users to load several types of paper sizes/colors at the same time in a single machine.

A Variety of Media Acceptable

The e-STUDIO3511/4511 offers a wide range of options to create documentation. High quality copy or print images can be obtained on various types of media, including:

- Thick paper
- 12 x 18 Media
- OHP sheet
- Postal cards (Applicable date may vary by region)

GENERAL FEATURES

Optional Finishers

The optional Finishers increase the speed and efficiency of making multiple copy/print sets and simplify complex jobs to produce professional looking documentation. Three types of optional Finishers are available: a Hanging type Finisher MJ1022*, a Multi-staple Finisher MJ1023 and a Saddle-stitch Finisher MJ1024.

When the e-STUDIO3511/4511 is used on the network, copies are ejected onto the upper tray and printouts onto the lower tray by default. When adding the optional Fax Board, incoming faxes print to the Central Output Tray.

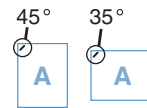
* The Hanging type Finisher MJ1022 is only available for the e-STUDIO3511.

The Finishers deliver outstanding performance in combination with a variety of finishing related modes, as follows:

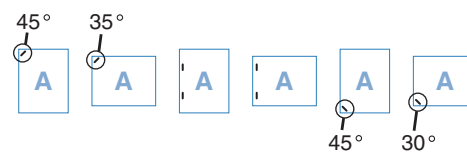
- **Sort/Group** — This function is available for all three Finishers. Collated or grouped sets of copies/prints can be made.
- **Staple** — This function is available for all three Finishers. Copy/Print sets can be stapled automatically.
- **Cascade** — This capability is available for all three Finishers. When making a large number of copies/prints, if the first bin becomes full, documents will automatically be fed into the second bin. When the second bin also becomes full, and if the first bin is already empty, documents will automatically be fed back into the first bin.
- **Offset** — This capability is available for all three Finishers. Sorted copy/print sets are separated by slightly offsetting alternate sets toward the front of the tray.
- **Saddle-stitch** — This function is available exclusively for the Saddle-stitch Finisher MJ1024. The Saddle-stitch mode staples at the center and folds magazine-sorted outputs.

Finisher Types and Staple Positions

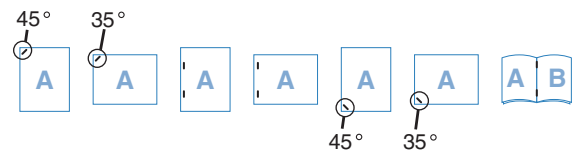
- MJ1022 — Hanging type Finisher



- MJ1023 — Multi-staple Finisher



- MJ1024 — Saddle-stitch Finisher



Optional Hole Punch Unit

The Hole Punch Unit is available only when the Multi-staple Finisher MJ1023 or Saddle-stitch Finishers MJ1024 are installed. Holes are punched in a set of outputs automatically to make it easier to bind the document.

It increases the productivity of punching holes in sets of copied/printed document drastically.

* The number of holes punched and their positions vary by region.

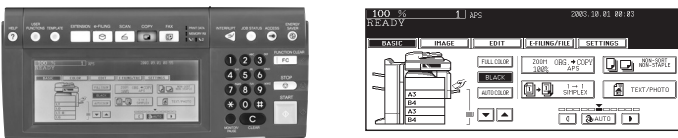
GENERAL FEATURES

EASY-TO-SEE AND EASY-TO-USE WIDE CONTROL PANEL

The e-STUDIO3511/4511 enhanced Control Panel and Touch Panel Display provides users with better viewability and more comfortable key entries.

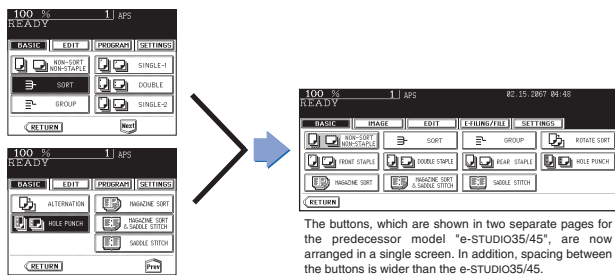
Half-VGA Touch Panel Display

The e-STUDIO3511/4511 is equipped with the half-VGA Touch Panel Display.



General view of the Control Panel and Touch Panel Display

The e-STUDIO3511/4511's user interface is harmonious with previous generation model's. However, a big difference is the size of the Touch Panel Display – the e-STUDIO3511/4511 features a wide Touch Panel Display, allowing for more information to be shown on a single screen. Also, the wide Touch Panel Display shortens work flow, so it's much easier for users to access a mode or function that they are looking for. In addition, spacing between the buttons is wide enough to avoid mistakes.



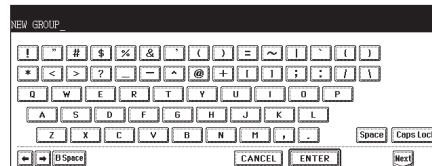
e-STUDIO35/45

e-STUDIO3511/4511

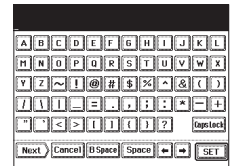
The buttons, which are shown in two separate pages for the predecessor model "e-STUDIO35/45", are now arranged in a single screen. In addition, spacing between the buttons is wider than the e-STUDIO35/45.

QWERTY Keyboard

The e-STUDIO3511/4511 features a responsive QWERTY touch keyboard. This key arrangement is more familiar to users who operate PCs and allows easy entry of text or symbols.



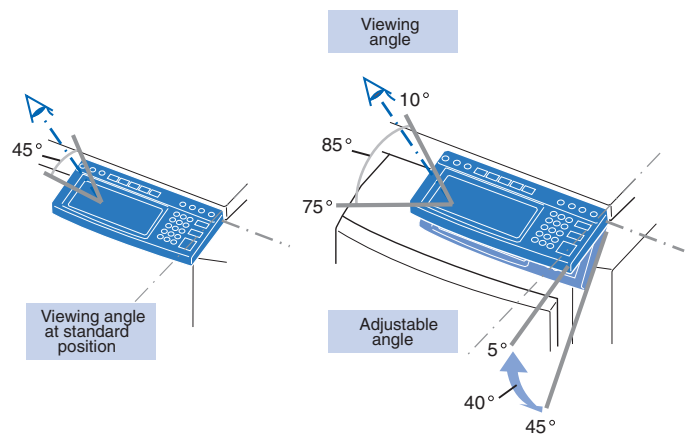
e-STUDIO3511/4511



e-STUDIO35/45

Tilt Type Control Panel

The Control Panel tilts to more convenient viewing angles and achieves stress-free operation for many more users, as illustrated below. For example, it's easily accessible to people in a wheelchair.



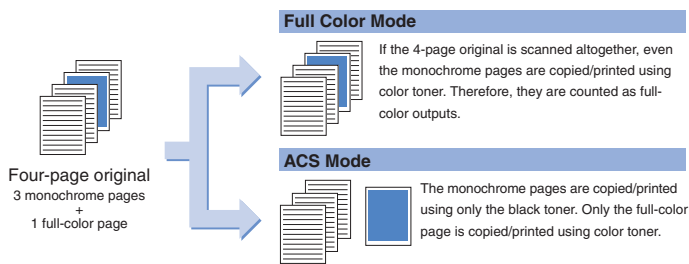
COPIER FEATURES

Easy Black & White and Full-Color Image Output

The e-STUDIO3511/4511 provides the following three color modes:

- **Black Mode** — All originals are copied/printed out in black & white, regardless of their color.
- **Full-Color Mode** — All originals are copied/printed out in full-color.
- **ACS (Auto Color Selection) Mode** — Determines whether originals are full-color or black & white. Full-color originals are automatically copied/printed out in full-color, and black & white ones in black & white.

When the e-STUDIO3511/4511 is placed in ACS (Auto Color Selection) mode, the black & white pages are automatically copied in black & white using the black toner only, and the full-color pages in full-color using color toner, even if an original contains both black & white and full-color pages. This prevents users from making copies or printouts in an unexpected color mode. As a result, they can save paper and the time of redoing the copy or print jobs. In addition, as illustrated below, users only bear the higher full-color CPC when making full-color copies or printouts, not when making black & white ones. This significantly reduces the running cost and saves money.



High Copy/Print Image Quality

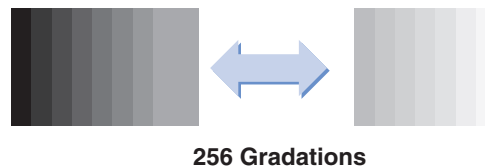
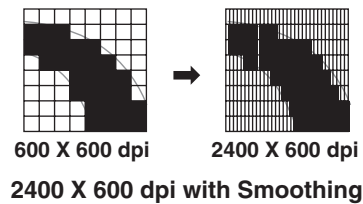
The image processing technologies adopted for the e-STUDIO3511/4511 brings users image quality, which best fits their documentation needs.

2400 x 600 dpi with Smoothing Technology for Black & White

The e-STUDIO3511/4511 produces exceptionally sharp images with a copying/printing resolution of 2400 x 600 dpi in black & white. Although original images are digitized at 600 dpi, the copying/printing resolution in black & white is enhanced to 2400 x 600 dpi, thanks to the smoothing technology, resulting in razor sharp text quality.

256-Step Gradations

The e-STUDIO3511/4511 provides high resolution with 256 gradations for each color element, enabling the reproduction of halftones with greater clarity.



COPIER FEATURES

Original Mode

The e-STUDIO3511/4511 offers users a variety of original modes for optimum copy image quality. The table below briefly describes each mode and shows you whether it is available in color mode.

- **Text** — Available in Black mode and Full-Color mode.
This mode is suitable for reproducing sharp text and fine lines.
- **Text/Photo (default)** — Available in Black mode, Full-Color mode and ACS mode.
This mode maintains high image quality for an original containing both text and photos.
- **Photo** — Available in Black mode and Full-Color mode.
This mode is suitable for reproducing details of a photo image printed on a photographic paper, preventing the image from looking bluish.
- **Printed Image** — Available in Full-Color mode.
This mode is suitable for reproducing an original with high fidelity, eliminating moiré from a halftone original (offset printing).
- **Map** — Available in Full-Color mode.
This mode is suitable for obtaining a sharper copy image of a map, which contains both black and color text in a color background.
- **Image Smoothing** — Available in Black mode.
This mode is suitable for reproducing halftones.

Image Quality Adjustment

The e-STUDIO3511/4511 allows users to adjust copy/print image quality to obtain their desired output through a simple operation on the Control Panel or Printer Driver. The table below describes adjustment modes that the users can access from the Control Panel.

- **Color Balance** — This mode is intended to adjust the color balance of copies by altering the intensity of the subtractive primary colors: C, M, Y and K.

- **RGB Adjustment** — This mode is intended to adjust the color balance by altering the intensity of the additive primary colors: R, G and B.
- **One Touch Adjustment** — This mode is intended to make a copy or print image look warm, cool, vivid or clear, depending on user needs, through a simple operation on the Control Panel.
- **Background Adjustment** — This mode is intended to eliminate noise or darker color from the background to enhance contrast on a copy image.
- **Sharpness** — This mode is intended to enhance the edges of text or fine lines.
- **Twin Color Mode** — Originals are copied in black and red or any color that users choose.
The following three options are available:
[RED & BLACK]Red in an original → Copied in red
Others in an original → Copied in black
[TWIN COLOR SELECTABLE]Black in an original → Copied in C, M, Y, K, R, G or B
Others in an original → Copied in C, M, Y, K, R, G or B

Fast First Copy Time and Warm-up Time

The e-STUDIO3511/4511 is ready-to-copy/print as soon as it is turned on, reducing the waiting time dramatically, particularly when compared to a regular full-color MFP. The first copy time of the e-STUDIO3511/4511 is approximately 6.8 seconds in Black mode, and 16.2 seconds in full-color mode. In addition, thanks to the Twin IH (Induction Heating) Fusing Technology, its warm-up time has been drastically reduced to 40 seconds.

Memory Copy

128 MB Page Memory and a 60+ GB Hard Disk Drive come standard with the e-STUDIO3511/4511. This enables access to various digital features including Scan Once/Copy Many, Electronic Sort, Magazine Sort and N-in-1. The 60+ GB HDD memory capacity will suit users who frequently work with full-color, large-volume, graphics-intensive documents that typically require a large amount of storage space.

COPIER FEATURES

Scan Once/Copy Many

When using Scan Once/Copy Many, an original is scanned only once. The image is stored as digital data in the machine memory and output is produced from this stored image, rather than through continual scanning of the original as with analogue copiers. Originals can therefore be retrieved immediately after scanning, and the original of the next copy job can be placed on the RADF. Scan Once/Copy Many also reduces noise and excess power consumption which results from multiple scanning.

Job Reservation

The e-STUDIO3511/4511 provides an advanced Job Reservation capability. This function enables users to use Pre-Scan for copy, scan or optional fax jobs during another printing or copying as the concurrent process works independently of printing and scanning, without waiting time at the machine. It is possible to reserve up to five different jobs, each of which will start automatically as the previous job finishes. This improves overall productivity and convenience in conjunction with the benefits gained from the Auto Job Start capability.

Convenient Electronic Sorting

Electronic sorting stores images to memory and then outputs documents copies in order, on demand. This feature improves convenience for users. Moreover, the following additional two functions are available.

- **Alternation** — With A4/Letter or A4-R/Letter-R paper fed in the machine, each Copy/Print set is alternately stacked vertically and horizontally in the Inner Exit Tray, making it easier to separate outputs.
- **Magazine Sort** — Double sided, two page spread Copy/Print sets can be produced in proper magazine order, providing fast and efficient magazine page layout. A combination of the optional Saddle-stitch Finisher and magazine sorting allows you to create an attractive booklet easily and automatically.

Energy Saving Functions

The e-STUDIO3511/4511 minimizes power consumption with the following energy saving functions:

- **Auto Energy Saver** — This function automatically lowers the fuser unit temperature to stand by with the minimum power consumption when the machine is not being used for a selectable period of time (3 - 60 minutes).
- **Auto Sleep Mode** — This function automatically cuts off unnecessary electricity to the fuser unit when the machine is not being used for a selectable period of time (3 - 240 minutes).
- **Weekly Timer** — The Weekly Timer function allows users to set an automatic start up or shut down time for the unit for each weekday. Taking advantage of the Weekly Timer function eliminates energy waste caused by users who forget to turn off the unit when leaving the office.

These energy saving capabilities can reduce power consumption and cut electricity costs drastically.



COPIER FEATURES

Advanced Digital Features

The e-STUDIO3511/4511 provides a variety of convenient digital copier-specific functions, allowing users to create documentation more easily, without any additional manual labor:

- **Edge Erase** — A white border is created along the edges/center of the copy, eliminating unwanted edges of a poor original.
- **Image Shift** — An image can be shifted slightly to create a margin for binding.
- **Dual-Page Copying** — The facing pages of a book or magazine are copied page by page onto two separate sheets of paper.
- **X-Y Zoom** — Different reproduction ratios can be set for the X (horizontal) and Y (vertical) axes.
- **Trimming/Masking** — Copy only the desired area of an original by specifying the area to be copied (trimming) or to be erased (masking).
- **Mirror Image** — Copies are made with images completely reversed and side by side.
- **2-in-1, 4-in-1 or 8-in-1 (Duplex)** — A two- or four-page document can be reduced and copied onto one sheet of paper.
- **Job Memory Copying (with the template)** — This function allows users to store a combination of frequently used copy settings in advance, including reproduction ratio, copy density and quantity and paper size. Utilized in conjunction with the template functions, this function will be more efficient with reducing operational work flow.
- **Annotation and Page Numbering** — Date- and time-stamp copies, or add page numbers.
- **Cover Sheet and Sheet Insertion** — A blank or printed of paper can be inserted as follows: a blank front cover page/a printed front cover page / blank front and back cover pages/a printed front cover page and a blank back cover page
- **Rotation Copy** — If the orientation of an original is different from that of paper loaded in a drawer, a scanned original can be rotated to fit the paper.
- **Image Direction** — This function is used to print a landscape document in portrait orientation.

NETWORK PRINTING FEATURES

PRINTER FEATURING DIGITAL COPIER-SPECIFIC CAPABILITIES

Compared to a conventional stand-alone type printer, the e-STUDIO3511/4511 provides faster and far more superior print capabilities with digital copier-specific functions. Installing a variety of paper handling options provides functionality not normally found in stand-alone type printers:

- Duplex printing
- Magazine sorting & Saddle-stitching
- Sorting
- Optional hole punching
- Stapling

EASY-TO-INSTALL/USE PRINTER DRIVER

Depending on the operating environment, various installations are available to help users install the printer driver easily:

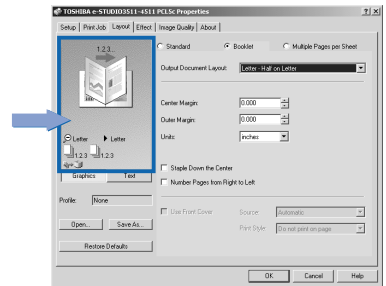
- **Installer** — The installation wizard in the CD-ROM automatically guides users through the process of installing drivers and other software.
- **Point and Print** — The printer driver can be installed by simply double-clicking on the network print queue.
- **TopAccess** — TopAccess, which is web-based utility, allows users to download the printer drivers and other software applications from the Toshiba e-STUDIO3511/4511.

The printer driver is designed to be user friendly:

- **Intuitive user interface** — The print driver has been designed with the user in mind, comprising of a simple and intuitive layout. Even complex jobs can be sent to the machine with very little effort resulting in not only a better end result but an improvement in work efficiency.

- **Preview windows** — Users can preview their job on-screen before printing, minimizing possible errors. The user-friendly interface will preview even advanced editing and finishing features of the e-STUDIO3511/4511 such as magazine sort.

The preview window gives users a clear picture of what the printout will look like. In addition, the currently specified values or options are immediately reflected in preview. For instance, for the magazine sort printing, the users can confirm how pages are laid out before starting to print them out.



Optimal Color Selected for Business Documents

The e-STUDIO3511/4511 enables to select one of the following print modes to provide the best image quality, according to the type of image or document to print out:

- **Photo** — This applies proper color quality for printing photo images.
- **Presentation** — This applies proper image quality for printing a presentation.
- **Line Art** — This applies proper image quality for printing line arts.

Standard PCL5[®]c/PCL6[®] and PostScript[®]3

The e-STUDIO3511/4511 provides PCL5[®]c/PCL6[®] (5e + XL) and PostScript[®]3 emulations, with faster printing of complex graphics, more efficient data streams for reduced network traffic, and improved print quality, truer to the original.

- Black & White: PCL6[®], PostScript[®]3
- Full-Color: PCL5c[®], PostScript[®]3

NETWORK PRINTING FEATURES

Compatible with Popular Office Networks

The e-STUDIO3511/4511 can serve as a network printer which has been designed to seamlessly integrate with a wide variety of PC and network Operating Systems. The e-STUDIO3511/4511 is compatible with the following systems. OS supporting the printer driver:

- Windows®: Windows® 98, Windows® Me, Windows® NT 4.0, Windows® 2000, Windows® XP
- Macintosh®: Mac® OS 8.6, Mac® OS 9.X, Mac® OS X v10.1/10.2
- UNIX® filter — Solaris (SUN®): v2.6/2.7/7.8/8/9
HP-UX: v10.20, 11i.v1.6
AIX (IBM): 4.3.3, 5L
Linux®: Red Hat 6.2/7.1/7.2/7.3/8.0 SuSE Linux® v7.0
Mandrake
Linux® v 7.1/9 Turbo Linux® 8
SCO: UnixWare 7, Open UNIX® 8
- Standard Interface — Parallel, Ethernet 10/100BaseT and USB1.1
- Network OS(for client/server) — Windows® 2000, Windows® NT 4.0, NetWare® 4-6
- Network OS(for Peer-to-Peer) — Windows® 98/Me/2000, Windows® NT 4.0/XP
- Protocols — IPX/SPX, TCP/IP, EtherTalk®, NetBIOS on TCP/IP, LPR/LPD, IPP (ver.1.1), NetWare® P-SERVER, Port 9100

Optional Wireless LAN Solution (IEEE802.11b Compliant)

The e-STUDIO3511/4511 also supports an optional Wireless LAN Adapter GN-1010. The GN-1010 complies with IEEE Standard 802.11b for wireless LAN, and is independent of operating systems or protocol. This will help users easily implement a wireless LAN solution in their offices.

Standard 384 MB Memory

The e-STUDIO3511/4511 comes with 384 MB of RAM as standard (256 MB for the main memory and 128 MB for the page memory), and can be expanded up to 512 MB. It is recommended to upgrade the memory, when handling a large size of print jobs or full-color, high-resolution text and graphics, such as PostScript®3 data. Moreover, with the optional memory printing resolution in color can be improved to 1200 x 600 dpi.

Large-capacity Hard Disk

A 60+ GB huge-capacity hard disk comes equipped with the e-STUDIO3511/4511, allowing for the storage of large-sized full-color prints. As a result, it facilitates large volume printing, electronic filing, electronic sorting and fax transmission/reception.

High Speed RIP Processing (RACe)

The e-STUDIO3511/4511 uses Toshiba's original RIP Accelerator Chip for RIP processing. The RIP Accelerator Chip optimizes data processing for printing and reduces time from "print order" to "print out" significantly.

N-in-1 Printing

This function enables multiple originals to be condensed onto one or both sides of a single sheet for a maximum of 32-in-1 (16-in-1 duplex). This is particularly suitable for document reference files, for which print size is not usually an issue. Users who have to carry a lot of paperwork can reduce not only the bulk and weight of lengthy documents but also paper and printing costs.

Private Print

The private print function allows users to print out a confidential document via an operation on the Touch Panel Display. A print job is password protected on the computer. Then the job is sent to the machine and stored securely in the hard disk. After that, the users approach the machine, enter the password on the Touch Panel Display, and then start printing out the job.

Proof Print

The proof print function is a feature which is perfect for large print jobs consisting of many sets. This function gives users the ability to send their complete job to the machine but be able to proof the first set before deciding to continue with the rest, therefore minimizing on errors. The user can make changes to the proof job at the control panel to print, delete or alter the number of sets.

Scheduled Print

This allows users to specify the date and time a print job is to be output. Users can schedule the printer to print out large-volume documents in their off-hours, which minimizes waiting time for other jobs.

NETWORK PRINTING FEATURES

Other Convenient Features

The table below describes other functions which increase the convenience and usability in print mode.

- **Double-Sided Printing** — The Auto Duplexing Unit (ADU) provides double-sided print. Taking full advantage of the double-sided print capability saves paper.
- **Cover Sheet and Sheet Insertion** — Either a blank sheet or printed page can be inserted as a front and/or back cover. Special types of paper can also be inserted at the desired page.
- **Watermark** — Users can add a text watermark either on the first page or all pages of a document. Besides the default watermarks, users can customize their own text and change the font size and type, darkness, angle and positions.
- **Image Overlay** — This allows users to print a job to an image overlay file to store it as an image overlay. Then the users can use this stored image to overlay on another print job to create a new image.
- **Stored Job Print (e-Filing)** — Frequently printed documents can be temporarily stored on the machine's hard disk for later printing. The stored document can be printed immediately or at any time through a simple operation on the Control Panel or over the network via a web utility of "e-Filing" browser.

NETWORK SCANNING FEATURES

HIGH SPEED BLACK & WHITE/COLOR SCANNING

The e-STUDIO3511/4511 comes with a built-in network scanning as standard. The scanning speed is a very fast 50 pages per minute for black & white - and a very respectable 20 pages per minute for color.

In addition, thanks to Toshiba's advanced data compression technology, the e-STUDIO3511/4511 gets faster data processing speeds with no loss of image quality when scanning by compressing color scanned

SRGB DATA RGB COMPLIANT COLOR SCANNING

Thanks to Toshiba's advanced scanning technology, the e-STUDIO3511/4511's output color scans are compliant with the sRGB standard. As a result, scanning is not only quick and easy but offers superb color matching particularly when used with sRGB compliant devices including PC display screens, projectors, and printers.

Of course, the e-STUDIOS built-in printer functionality is also sRGB compliant.

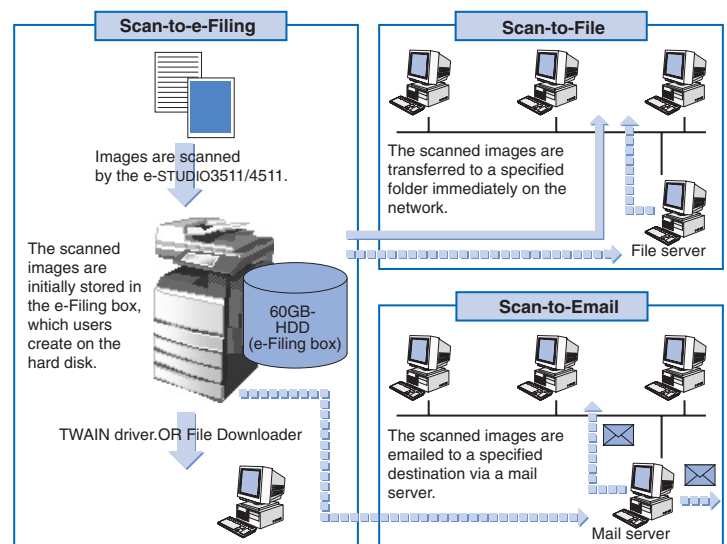
SCAN-TO-FILE/SCAN-TO-ELECTRONIC FILING (e-Filing)

The e-STUDIO3511/4511 can be used as a network scanner. Users can scan documents or images in either black & white or full-color, convert them into electronic form, and share them over the network. The scanned images are initially stored on machine's hard disk or the e-Filing box, which users create on the hard disk, in JPEG (color/grayscale) or MMR (black & white) format. Users can retrieve the scanned documents or images, as follows:

- **Scan-to-file** — Is used to transfer images to a specified folder created on a client PC or file server directly and can also be saved on machine's hard disk then transferred using the SMB protocol or FTP.
- **Scan-to-e-Filing** — Is used to store scanned images in the electronic filing (e-Filing) box, which users create on the hard disk. Users can access the e-Filing box and retrieve scanned images using the TWAIN driver or "File Downloader" free application.

SCAN-TO-EMAIL

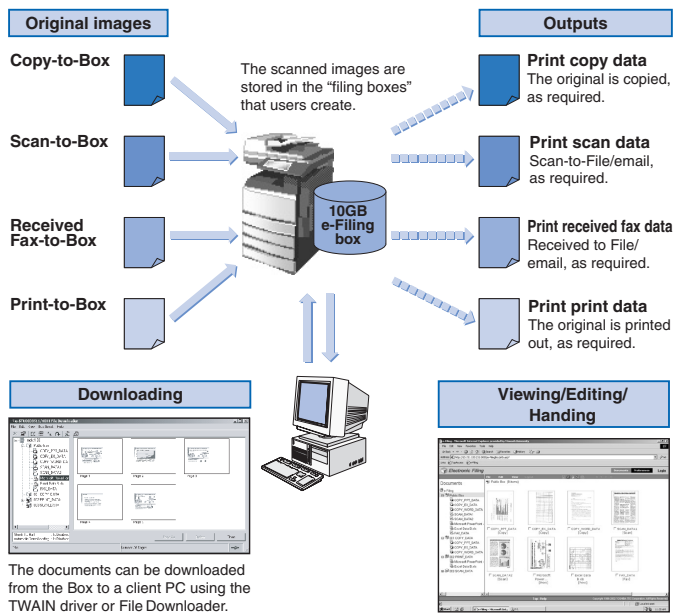
'Scan-to-Email' is another convenient method to transfer scanned images to clients. Scanned images are transmitted to specified destinations as attached files via the mail server. Users can pre-program destination email addresses, an email subject, sender's name, main body text, and select the attached file format. Users can also enter the destination email addresses manually for each operation. The e-STUDIO3511/4511 can send email attachments up to 30 MB in size. This allows easy transmission of large-sized complex full-color images to remote parties by email.



e-FILING FEATURES

OVERVIEW

The e-STUDIO3511/4511 features an electronic filing (e-Filing) function. This feature allows pages from different sources to be stored on the machine's hard disk as a single electronic format, then be easily edited before output. Information from such various sources as copy, scan, print, and fax data can be stored in the filing boxes. These images can be retrieved using the TWAIN driver or File Downloader, then viewed and edited using the Web-based utility before printing in black & white or full-color.



Using the e-Filing function, users can copy and convert a frequently used document into electronic form, and store it in the Box. The document is now available at the machine and on demand eliminating the need to take originals back to the machine.

e-Filing boxes and folders

Users can create “filing boxes” and folders on the hard disk to store their scanned images. The table below shows the number of boxes and folders that users can create for e-Filing:

- **Public box** — Max. Quantity: 1 — The Public box is available to all users and administrators.
- **User box** — Max. Quantity: 200 — Users can create up to 200 individual user boxes on the hard disk via the Control Panel or Web-based utility. Each box can be password-protected to ensure security.
- **Folders** — Max. Quantity: 100/folders — Users can create and name up to 100 folders per box by using the Web-based utility.

e-Filing Processing (Method to Store Image)

Users can store copy jobs, print jobs, scan jobs and incoming faxes (option) in the e-Filing boxes, as follows:

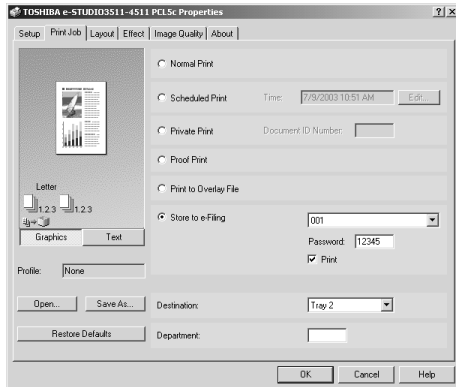
- **Copy-to-Box** — A copy job is stored in the box in Toshiba's unique file format. It can also be copied at the same time, as required.
- **Scan-to-Box** — A scan job is stored in the box in JPEG (color/grayscale) or MMR (black & white) format. A scanned image is transferred or emailed to specified destinations using Scan-to-File or Scan-to-Email at the same time, as required.
- **Received Fax-to-Box** — An incoming fax is stored in the box in MMR. Using the Fax Mailbox (ITU-T compatible) feature, a fax received with ITU-T Sub-address (SUB, Fcode) can also be stored into the appropriate box. For a fax without SUB, an administrator can specify a forwarding destination (Fax received forward).
- **Print-to-Box** — A print job is stored in the box in Toshiba's unique file format.
- **Received Internet Fax-to-Box** — Incoming Internet Fax documents can be stored in the box. An administrator can specify a forwarding destination (I-Fax received forward).

e-FILING FEATURES

Operability for e-Filing

Printer Driver

The Print-to-Box option is available in the printer driver. Users can specify a destination box for storing a print job, password-protect it, and choose whether to print it out or not.



Printer driver screen

Control Panel

The user-friendly screens help users to specify a box for storing and retrieving images, set up, edit or delete a box, and password-protect it.

Box setup screen



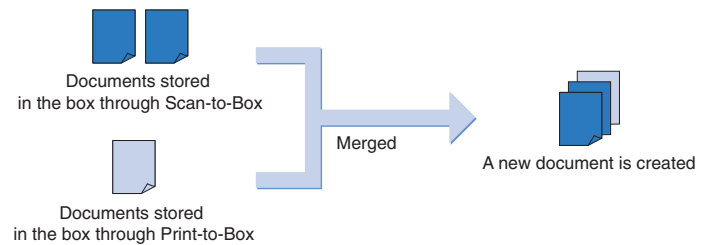
Box selection screen



Web-based Utility

Documents stored in the box can be viewed or shared over the network using the web-based utility.

In addition, through the e-Filing function, different stored documents in the box can be merged together to make a new document, regardless of their original source, as illustrated below.



Note: The documents stored through Copy-to-Box cannot be merged.

It is difficult and time consuming to integrate multiple pages created on different applications or different platforms into one complete document. But the e-Filing function used in conjunction with the Web-based utility allows such pages to be easily merged.

FAX FEATURES

STANDARD ECONOMICAL INTERNET FAX

The e-STUDIO3511/4511 comes standard with the Internet FAX function. The concept of Internet Fax is to transmit or receive the fax data using the IP network, including the Internet or intranet, as a part of or as the entire transmission path. Internet Fax also refers to a device, service or software that is capable of transmitting or receiving a fax over the IP network. With the e-STUDIO3511/4511, users can access the Internet Fax mode simply by pressing the FAX key on the Control Panel.

On Ramp/Off Ramp Gateway Functions

Not only can the e-STUDIO3511/4511 send and receives faxes via fixed phone lines, it can also make use of the Internet to increase cost effectiveness. The On Ramp Gateway function allows documents to be received from F-code compatible G3 faxes and disseminated to other Internet fax machines or PCs. The Off Ramp Gateway function, on the other hand, allows faxes to be received via the Internet and relayed to other fax machines through the public switched telephone network. This convenient function allows local faxes to be sent at local phone rates, and long distance rates can be avoided through use of the Internet. Both On Ramp and Off Ramp functions can be configured to run simultaneously.

EFFICIENT NETWORK FAX

The network fax allows users to fax a document directly from the client PCs. When the document is created, the e-STUDIO3511/4511 print driver is used to send the document. Instead of being printed, it is directly transmitted to specified destinations over the network and/or phone line.

The Address Book Viewer allows the users to add frequently used email addresses and dialed fax numbers to the address book.

Note : The optional FAX Board is required for walk-up Fax via phone line

OPTIONAL WALK-UP FAX (SUPER G3/G3)

The e-STUDIO3511/4511 can operate as a multi-featured facsimile, designed to provide high-speed transmission and reduction in communications costs. The table below describes other functions which increase convenience and usability in FAX mode.

Super G3 Fax

When the optional FAX board is installed, the e-STUDIO3511/4511 can serve as a Super G3 facsimile with a 33.6 Kbps fax modem compatible with ITU-TV.34 to transmit or receive a fax almost twice as fast as a G3 facsimile can. That results in significant reductions in communications costs, particularly for long distance faxing.

2nd Line Option

With the optional 2nd line installed, users can start transmitting a fax before an incoming fax is completely received. The 2nd line can be dedicated for reception only if required and can be configured to be used for peak periods.

JBIG data compression

The e-STUDIO3511/4511 supports JBIG data compression. This image compression format substantially decreases transmission time, compared to conventional data compression methods. JBIG is particularly efficient when transmitting a fax containing a lot of grayscale images or photographs, result in a cut of transmission time and costs.

Memory capacity

High demands for fax communication are easily managed by the e-STUDIO3511/4511 with its standard large capacity memory of 240 MB for transmission and 120 MB for reception.

Versatile Transmission/reception methods

- **Direct Transmission** — The destination facsimile is dialed immediately, and a fax can be transmitted while being scanned.
- **Memory Transmission** — A fax automatically starts transmission after it is temporarily stored in the memory.
- **Delayed Transmission** — A fax is transmitted to a specified destination facsimile at a specified time, programmed up to one month in advance.
- **Quality Transmission** — When there is excessive line-noise present, this mode can be enabled to slow down the transmission rate and ensure that the fax can be received at the destination successfully.

FAX FEATURES

- **Relay Transmission(F-code compliant)** — A fax is transmitted to a hub station where a relay mailbox is created, then the fax is relayed to final destinations, resulting in savings of phone charges.
- **Recovery Transmission** — In case of fax transmission error, the fax is stored in memory for a specified period of time. This function gives users a chance to retransmit the fax without requiring them to rescan the original.
- **Priority Transmission** — Users in a hurry can transmit a fax prior to other reserved transmissions.
- **Busy Transmission** — If the e-STUDIO3511/4511 fails to connect using the primary number stored in the Phone Book, it can dial an alternative number.
- **Batch Transmission** — Two or more reserved jobs at a time can be faxed to one remote destination to reduce communications costs.

Multi Access (Dual Access)

This function allows the main unit to perform two jobs concurrently, reducing the likelihood of job conflict. For instance, users can make copies, print out documents, or transmit faxes from the memory, while receiving incoming faxes.

Private Mail Box/Public Mail Box (F-code)

Private mailbox is a secure transmission method. Users cannot receive mail until they enter a password. Once transmitted, however, the information will be deleted from the sender's memory.

Public mailbox is similar to a bulletin board, where information posted remains for future access. This feature is also password-protected.

Transmission/Reception of Large-Size Fax

Making full use of the rich paper handling capabilities and sources, users can transmit and receive/print out an A3/Ledger-sized document or technical drawing.

Duplex Transmission and two-sided printing

With the optional Reversing Automatic document Feeder (RADF) installed, the e-STUDIO3511/4511 allows two-sided documents to be scanned and transmitted sequentially. In addition, the Duplex Print mode can print out received faxes on both sides of the paper.

Operability for Fax

For the e-STUDIO3511/4511, both a fax number and an email/Internet FAX address of a particular party can be registered in a "single" address book. The address book can be accessed through a simple operation on the Control Panel or by utilizing the Web based TopAccess utility. The email address and/or fax number can be easily added to or deleted from the address book. In addition, data in the address book can be imported from other sources, exported to create a clone address book on another machine, and backed up for security.



The e-STUDIO35/45 has a separate phone book and email address book. A user needs to enter or search for a fax number of Company A in the phone book, and an email address in the address book.



For the e-STUDIO3511/4511, the phone book is integrated with the email address book. This allows users to enter or find both a fax number and email address of Company A in the single address book.

The newly designed address book significantly simplifies the steps to enter and search for fax numbers and email addresses, increasing user-friendliness and convenience.

MULTI-TASK FEATURES

Concurrent Processing

The e-STUDIO3511/4511 can process one job while a preset job is in progress. Up to five jobs in total can be preset via the Control Panel or Web-based utility, with priority given to those set at the Control Panel. In addition, using the dual agent function, two jobs can be completed simultaneously. For instance, if "Copy + Scan-to-File" is chosen for the dual agent function, while an original is being copied, it is scanned, converted into electronic data, and stored in a specific folder created on a client PC.

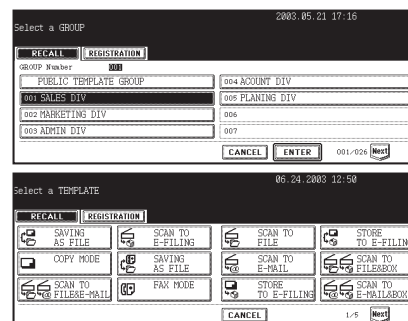
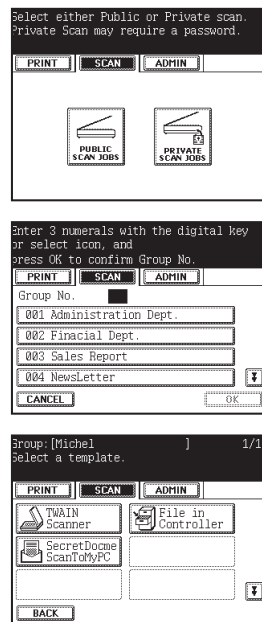
Dual Agent

The e-STUDIO3511/4511 enables to combine two agents and assign them to a convenient template, and seamlessly perform two jobs at the same time as follows:

- Copy + Scan-to-File
- Copy + Scan-to-Box
- Fax/Internet Fax + Scan-to-File
- Scan-to-File + Scan-to-Email
- Scan-to-Email + Scan-to-Box

Remarkably Easy-to-use Templates

The template function is intended for the users who wish to have their frequently used settings saved as a single touch graphical icon. There are 12,060 templates available in total (200 private groups which have 60 template for each + 60 templates for a shared group). Templates can be created or edited by any user (administrator or general user), and can be shared individually or within a department using a Web browser. In addition, it is also possible to name the template so its purpose is easily understood.



For the e-STUDIO3511/4511, pressing the [TEMPLATE] key on the Control Panel takes users to the initial template screen, where the templates for the copier, facsimile and network scanner can be customised. The templates for scan and fax jobs can also be created over the network using TopAccess.

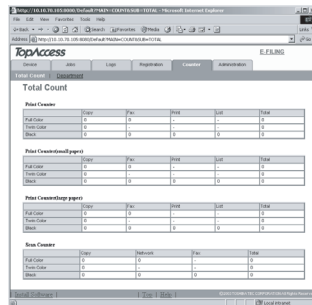
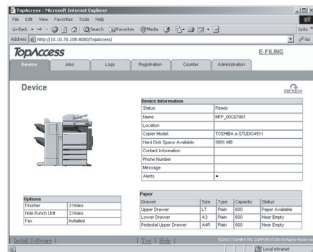
For the e-STUDIO35/45, the templates for the copier, facsimile and network scanner are created under completely separate menu. The templates for the copier and fax can be created only through an operation on the Control Panel. Only the template for the scanner can be created on TopAccess.

MANAGEMENT TOOLS

“TopAccess” Comes Standard

The web-based utility “TopAccess” comes standard with e-STUDIO3511/4511. It is designed to manage the status of the machine and jobs on any PC over the Internet regardless of OS or platform. When the machine is in an error state, including “Add Paper” and “Misfeed in Machine,” users can easily identify the problem and take prompt action. TopAccess represents a machine’s configuration graphically, so that the users can recognize sizes of paper currently loaded in the machine, what options are installed, and so forth. Users can also view print/scan counters and details on a specific job, including a user’s name, document name, date and time when the job was requested.

In addition, TopAccess provides functions specific to an administrator. For instance, only the administrator is authorized to change passwords, reset the Print Counter, and set up TopAccess, Job Log, Network and Printer settings.

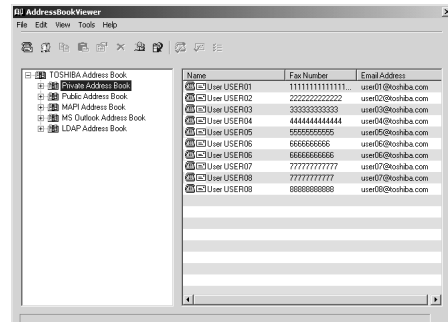


- Job status — Monitors status of printer jobs, scan jobs, e-Filing jobs and network fax transmission jobs.
- Job control — Printer jobs, scan jobs, e-Filing jobs and network fax transmission jobs in a queue can be deleted before execution.

Address Book Viewer

The Address Book Viewer is a utility used to add or search for fax numbers or email addresses of remote parties. For the e-STUDIO3511/4511, addresses and fax numbers are all managed in a single address book, which significantly increases convenience in adding, editing, or searching for the fax numbers or email addresses that are used to send documents or images.

Users can also import the public or private address books created on the e-STUDIO35/45 and GL-1010 to the Address Book Viewer. This saves manual re-entry all addresses.



Job Monitoring Tool, TopAccess DocMon

The job monitoring Tool, TopAccess DocMon for the e-STUDIO3511/4511 allows users to monitor all jobs, control their own current jobs and confirm the status of the system. With the notification feature enabled, messages pop up to notify users of copier or printing events, indicating information such as “job complete” or “unsuccessful” and device status, eliminating the need to walk to the machine to check status.

The table below shows items that the users can monitor using the TopAccess DocMon utility.

- Counter information — Users can monitor the total counters for copy jobs, printer jobs, and scan jobs.
- Device information — Displays configuration, name, model and location of the currently installed MFP.

Optional Scrambler Board

Toshiba has developed a new optional security board called “Scrambler Board,” designed to encrypt all data on the hard disk after copying, printing, faxing or scanning. This provides a high level of security for those who wish to further protect data resident in their machine.

OTHER CONVENIENT FEATURES

Other Convenient Features

- **Interrupt** — While one copy job is in progress, it can be interrupted using the INTERRUPT key and another copy job can be initiated. Once completed the interrupted copy job will resume.
- **Department Code** — The Department Code setting assists an administrator in knowing how many copies/prints/faxes/scans in black & white or in color have been made per group or department. Up to 1,000 individual department codes can be set by the administrator via the control panel or Web-based utility. The administrator is also authorized to print out the report of department usage and to reset the counters. Moreover, the administrator can not only manage output volume by each department, but also reduce a total volume of outputs by setting a limitation.
- **Languages Selection** — The language used to display messages on the Touch Panel Display can be selected. Six languages (English, German, French, Spanish, Italian, Japanese) are available by the factory defaults. Users can display Control Panel messages in the commonly used language in their region.
- **Paper Volume Indication** — The paper level or the amount of paper remaining in a drawer can be displayed on the Touch Panel Display and shown on the TopAccess web-browser.
- **JOB STATUS Key** — The JOB STATUS key provides a list of all jobs in a queue and help users to browse now many jobs are waiting before their jobs.
- **USER FUNCTIONS Key** — For the e-STUDIO3511/4511, just pressing the USER FUNCTIONS key on the Control Panel, users can easily access the initial setting screen of the address book setting, counter setting, user setting (such as copy, printer, scan and fax mode), and administrator settings (including the network setting energy saver mode and maintenance).
- **HELP Key** — Making full use of clear text description and graphics, the Touch Panel Display provides users with explicit, step-by-step troubleshooting guidance, including the location of occasional misfeeds and the procedure to refill toner.

ADVANCED TECHNOLOGY

The e-STUDIO3511/4511 is the culmination of the following leading technologies that only Toshiba offers:

New e-Bridge Controller

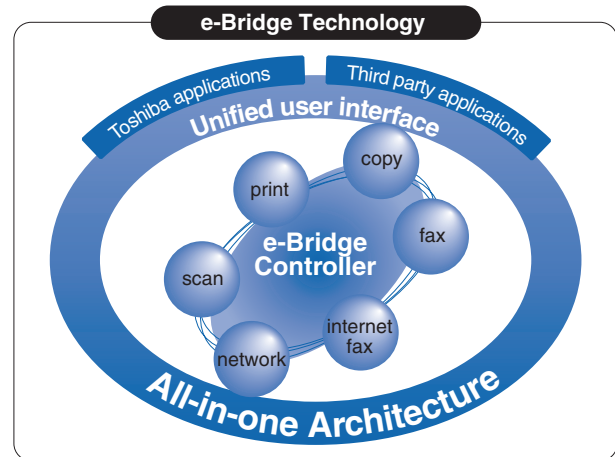
For the e-STUDIO3511/4511, Toshiba has developed "e-Bridge," designed to control multiple functions efficiently. Predecessor models required an optional printer board, network interface card or Document Controller to upgrade it to a network printer or printer/scanner. This means that copying, printing, and scanning were processed separately with the CPU mounted on each of the options. On the other hand, for the e-STUDIO3511/4511, these multiple functions are all integrated on a single board called "e-Bridge Controller" providing a more efficient platform utilizing a single CPU. This centralizes all kinds of jobs that the e-STUDIO3511/4511 performs, including copy jobs, print jobs, scan jobs and network communications.

Mounted on the e-Bridge Controller are the following:

- Toshiba-manufactured 64-bit RISC CPU, used to implement the concurrent processing of copying, printing, scanning and network communicating
- High-speed memory (PC133 SDRAM), arranged as image memory and system memory, to achieve high-speed concurrent processing
- UltraDMA, used by the controller chip to increase efficiency in data transfer
- Toshiba-manufactured RIP accelerator RACe chip, used to enhance performance of RIP, such as compression, decompression, and rotation

End User Benefits

- The e-Bridge controller greatly improves efficiency of concurrent multiple tasks by centralizing functions using a single CPU.

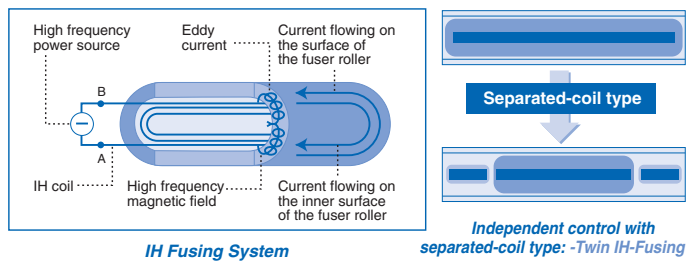


ADVANCED TECHNOLOGY

Improved Warm-up Time Thanks to Twin-IH Fusing

The e-STUDIO3511/4511 is the first full-color MFP system with Twin Induction Heating (IH) Fuser Technology. With the Twin IH fuser, a high frequency current flows through the IH coil inside the fuser roller and produces a high frequency magnetic field. This magnetic field produces an eddy current in the fuser roller. Then the resistance element of the fuser roller generates joule heat, which heats up the fuser roller. Using this method allows the fuser roller to be heated up directly in a fast and energy efficient way. This technology breaks the traditionally long warm-up time commonly found in full-color MFP systems and drastically reduces the approximate warm-up time to a record-breaking 40 seconds.

In addition, the TWIN-IH Fuser is designed to optimally control the fusing temperature and ensure efficient heating. The heat roller has been reduced to Ø60 in diameter, compared to Toshiba's high-end Black & White specific MFP systems where the heat roller is Ø80 in diameter. This structure allows the entire fuser roller to be heated evenly. As a result, toner is fused on paper more evenly.



End User Benefits

- Thanks to the Twin IH Fuser Technology, the e-STUDIO3511/4511 will be in a ready state almost immediately after it is turned on. The Twin IH Fuser Technology saves costs by increasing energy efficiency.

Newly Developed Toner

Low Temperature Fusing

The newly developed toner is fused on paper at a lower temperature, saving significant amounts of energy particularly when combined with the Twin IH Fusing system.

Matt Toner

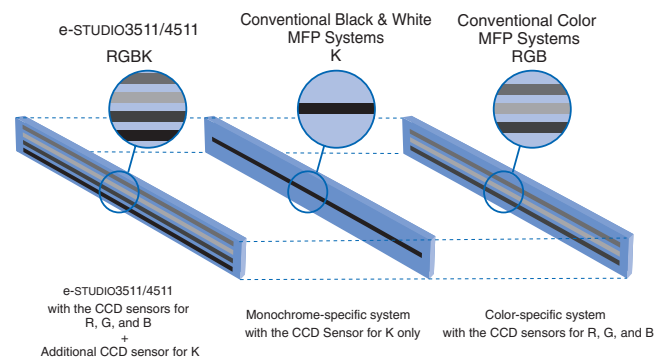
Because the toner has a matt finish, it is not only easier to read but also easy to handwrite annotations on the outputs with pens or highlighters.

End User Benefits

- Users can reduce power consumption and save electricity costs.
- Thanks to the newly developed toner, users can annotate feedback or comments on an original document with a pen or highlighter.

4 CCD Sensors to Scan Black

The e-STUDIO3511/4511 is the first MFP system equipped with 4 CCD sensors. Dedicated color MFP systems have 3 CCD sensors, each of which is covered with the R, G, and B filters to separate the light reflected from an original into red, green, and blue. Then the R, G, B data scanned by these CCD sensors undergoes image processing and is converted into C, M, Y, and K data for copying. In other words, even K or black output data is created for copying based on the scanned R, G, and B data. On the other hand, the e-STUDIO3511/4511 has not only the CCD sensors for R, G, and B, but also an additional sensor dedicated to capturing black data from the reflected light, which maintains the scan speed comparable to black & white specific MFP systems and increases sharpness of the black copy image output.



End User Benefits

- Thanks to the CCD sensor specifically for black data, users can obtain sharper, pure black output while maintaining the scan speed equivalent to black & white specific MFP systems.

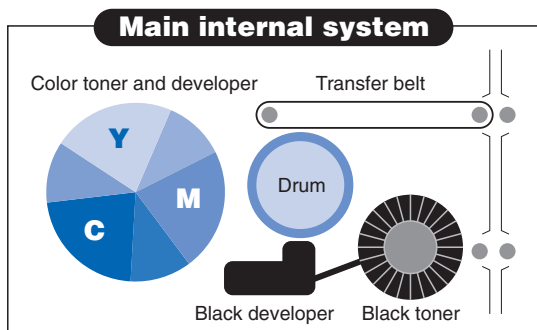
ADVANCED TECHNOLOGY

Unique 4-pass Color Developing System

Toshiba's precise downsizing technology enables the e-STUDIO3511/4511 to make use of a unique 4-pass color developing unit and still be as compact as any conventional black & white machine.

In most color MFP systems, the developing system applies the CMYK color toner directly in the cylinder, but with the e-STUDIO3511/4511, the black toner cartridge and developing unit are separate from the color toner cartridge and developing unit.

Since the black toner has its own cartridge, separate from the color toner cartridge, the e-STUDIO has a larger supply of black toner for its primary purpose of reproducing black & white document. Not only does the user save on toner cartridge changes but the machine can realize lower CPC for printout jobs. These are great benefits for offices who mainly do black & white printing and copying.



PURCHASE MOTIVATION

BENEFITS FOR DEALERS

This section shows many opportunities for you to harvest attractive profits from the before sales to the after sales. By becoming familiar with the e-STUDIO3511/4511, you are truly well equipped to achieve profitable success.

All-in-one feature wise

Easy installation

- Less options to install and set up
- Set up can be done at the customer's
- Compact enough to carry and move

Easy Firmware update

- No need for Firmware version matching
- Shorter rewriting time for all Firmware update

All-in-one MFP

- Less training for sales/service staff
- Less training for future models adopting similar technology
- Easier trouble-shooting with one board architecture

All-in-one physical wise

Easy inventory control

- Less effort for inventory management
- Narrower area for stock

Built-in controller

- 1 controller with full functionality
(No need for 2 types of controllers)
- Less inventory

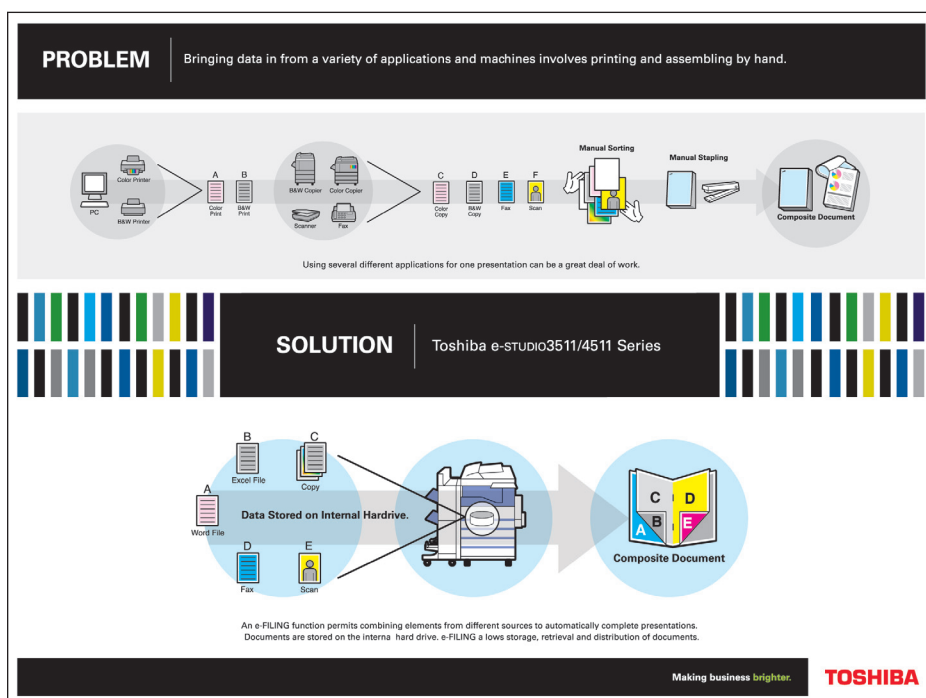
Original architecture

- Toshiba original controller
- Toshiba TEC solution friendly
- Same User Interface as copy operation
- Quick action for customization

Profitable supply business

Utilization of various counters

- Combination with Remote Maintenance system
Less visiting cost
Less click charge failure
- New toner business according to pixel counter
- 1 stop shop
- Click charge for all MFP functions
- Just replace black & white, enjoy color click charge



SPECIFICATIONS

General Specifications

Copying/Printing process	-Indirect Electrostatic Photographic Method
Type	-Desktop
Original scanning method	-CCD Line Sensor (4-Lines)
Resolution	
Scanning:	-600 x 600 dpi
Printing:	-600 x 600 dpi (B&W: 2,400 x 600 dpi with Smoothing) (Color: 1,200 x 600 dpi with Optional Expansion Memory)
Gradation	-256 Steps
Original platen type	-Fixed Hard Platen (Optional: RADF or Platen Cover)
Available original size	-Maximum A3/Ledger
Available copy paper size	
Cassette:	-Minimum A5-R/Statement-R, Maximum A3/Ledger
Stack Feed Bypass:	-Minimum A5-R/Statement-R, Maximum A3-Wide/12" x 18"
Paper supply	-Standard 2 Drawers and Stack Feed "Smart" Bypass
Available copy paper weight	
Cassette:	-64 to 105 g/m2 [17 to 28 lbs]
Stack Feed Bypass:	-64 to 209 g/m2 [17 to 110 lbs] (in Multi-feed Mode)
Auto Duplexing Unit	-Standard
Paper exit	-Face-down/Inner Exit Tray
Memory (Shared for All Imaging Functions)	
Main Memory:	-256 MB
Page Memory:	-128 MB
Optional Page Memory:	-128 MB
Hard Disk Drive	-60 GB+
Warm-up Time	-Approx. 40 Seconds
Counter	-Electronic 8-digit counter
Power supply & consumption	-Max. 1.7 kW (220 - 240 V)/ 1.5 kW (115 V)
Dimensions (W x D x H)	-660mm x 718mm x 739mm (26" x 28.3" x 29.1")
With Pedestal (or LCF):	-660mm x 718mm x 1016mm (26" x 28.3" x 40")
Weight	-Approx. 112 kg [246.9 lbs]
Special Features	-Energy Saver, Auto Energy Saver, Weekly Timer

Copier Specifications

Copy Mode	-Black Mode, Full-Color Mode, Auto Color Selection Mode
Copying Speed	
Black & White (A4/Letter):	-35 CPM (e-STUDIO3511), 45 CPM (e-STUDIO4511)
Color (A4/Letter):	-11 CPM
Multiple Copying	-1 to 999 Copies (Ten Key Input)
Reproduction Ratio	
Zoom:	-25 % to 400 % in 1 % Increments (Platen), 25 % to 200 % in 1 % Increments (RADF)
Original Size	-Statement-R to A3 to A5-R/Ledger
Copy Size	-Statement-R to A3 to A5-R/Ledger
First Copy Time	
Black & White:	-6.8 Seconds
Color:	-16.2 Seconds
Exposure Control	-Automatic/Manual (11 Steps)
Copy Density Control	-Automatic Toner Density Method
Special Features	-Interrupt, Dual page, Edge Erase, Image Shift, Trimming/Masking, Department Code, APS/AMS, Stack Feed "Smart" Bypass, Job Memory, Auto Job Start, Auto Cassette Change, Auto Duplex Mode, Cover Sheet, Sheet Insertion Mode, Date/Time Indication, Auto Sort Mode, Original Counter, Department Code Data Output, Mixed Size Original, Original Image Type, X-Y Zoom, Mirror, Alternation, 2-in-1/4-in-1, Page Number, Date/Time Print, Job Reservation, Image Rotation, Image Direction, Calibration, Color Balance Adjustment, RGB Adjustment, Sharpness Adjustment, Background Adjustment, One-Touch Adjustment

SPECIFICATIONS

Printer Specifications

Processor	-Standard Tx4937 333 Mhz (Shared for All Imaging Functions)
Printing Resolution	
Black & White:	-2400 dpi x 600 dpi (with Smoothing)
Color:	-600 dpi x 600 dpi, 1,200 dpi Quality x 600 dpi (Optional Expansion Memory Required)
Printing speed	
Black & White (A4/Letter):	-35 PPM (e-STUDIO3511), 45 PPM (e-STUDIO4511)
Color (A4/Letter):	-11 PPM
Interface	-Parallel (IEEE1284, ECP), Ethernet 10/100BaseT, USB 1.1 Optional Wireless LAN (IEEE802.11b)
Printer Language	
Black & White:	-PCL6®, PostScript®3
Color:	-PCL5®c, PostScript®3
Resident Fonts	-PCL® Font: 80 Fonts, PS Font: 136 Fonts
Network OS	
Client/Server:	-NetWare® 4.x (NDS), NetWare® 4.x (Bindery), NetWare® 5.x, NetWare® 6.x, Windows® NT 4.0 Server, Windows® 2000 Server, Windows® 2000 Advanced Server, Citrix® MetaFrame XP™
Peer-to-Peer:	-Windows® 98, Windows® Me, Windows® NT 4.0 Workstation, Windows® 2000 Professional, Windows® XP Professional/ Home, Mac®OS 8.6, Mac®OS 9.x, Mac®OS X ver.10.1/10.2, SUN® Solaris v2.6/2.7/7.8/8/9, HP-UX ver.10.20/11i/v1.6, IBM AIX 4.3.3/5L, SCO UNIX®Ware 7, SCO OpenUNIX® 8, Red Hat Linux 6.2/7.1/7. 2/7.3/8.0, SuSE Linux ver7.0, Mandrake Linux ver7.1/9, Turbo Linux 8

Protocols	-IPX/SPX, TCP/IP, AppleTalk® (EtherTalk®), NetBIOS Over TCP/IP
IP Addressing	-Static IP, Auto IP, BOOTP, DHCP, RARP
Printing Protocols	-Windows® Printing (SMB), LPR/LPD, IPP ver1.1, NetWare® PSERVER with NDS, NetWare® PSERVER with Binary, AppleTalk® (EtherTalk®), Port9100
Client Software	-Windows® Printer Driver, UNIX® Print Filter, Macintosh® PPD, Network Device Management Utility (TopAccess DocMon), Agfa Font Manager

Scanner Specifications

Connection Type	-Network (Ethernet)
Scan Image	-Black & White, Grayscale, Color
Scanning Resolution	
Black & White:	-600, 400, 300, 200, 150, 100 dpi*1
Grayscale:	-600*2, 400, 300, 200, 150, 100 dpi
Color/ACS:	-600*2, 400*2, 300, 200, 150, 100 dpi
	*1: Only for ACS Mode
	*2: Optional Expansion Memory Required
Scanner Speed	
Black & White	-Maximum 50 SPM (A4/Letter, 400 dpi)
Grayscale:	-Maximum 45 SPM (A4/Letter, 400 dpi)
Color:	-Maximum 20 SPM (A4/Letter, 300 dpi)
Data format	
Black & White:	-TIFF-MMR, TIFF-S (Internet Fax), PDF
Grayscale:	-JPEG, TIFF-JPEG, PDF
Color:	-JPEG, TIFF-JPEG, PDF
Compatibility	-TWAIN
Scan agent	-Scan-to-File, Scan-to-Email,
Special Features	-Job template for multiple agents, Address Book (Scan-to-Email), LDAP Search (Scan to-Email)

SPECIFICATIONS

e-FILING SPECIFICATIONS

Number of boxes	
Public Box: - - - - -	-1 Box
User Box: - - - - -	-200 Boxes
Number of Folders - - - - -	-100 Folders Per Box
Number of Documents - - - - -	-400 Pages Per Box/Folder
Number of Pages - - - - -	-200 Pages Per Document
Input-to-Box (Single Agent) - - - -	-Copy-to-Box, Print-to-Box, Received Fax-to-Box, Received Internet Fax-to-Box, Scan-to-Box
Input-to-Box (Multi Agent) - - - - -	-Copy & Box, Print & Box, Received Fax-to-File & Box, Received Internet Fax-to-File & Box, Received Fax-to-Email & Box, Received Internet Fax-to-Email & Box, Scan-to-File & Box, Scan-to-Email & Box
Output From Box - - - - -	-Box-to-Print
Client Software (Output From Network)	Twain driver (Available with Windows® 98/Me/ Windows® NT 4.0/2000/XP), File Downloader (Available with Windows® 98/Me/ Windows® NT 4.0/2000/XP)
Special Features	
e-Filing Web Utility: - - - - -	-Box Edit, Doc View, Folder Edit, Doc Edit, Page Edit, Archive
Control Panel: - - - - -	-Box Edit, Folder Edit

Internet Fax Specifications

Connectivity - - - - -	-T.37 (Simple Mode)
File Format - - - - -	-TIFF-S
Resolution - - - - -	-8 x 3.85 dots/mm, 8 x 7.7 dots/mm
Document size - - - - -	-A3, B4, A4, A4-R, B5, B5-R/LT, LT-R, LG, LD, ST-R, Folio
Address Book - - - - -	-1,000 Destinations (Shared With Fax Number When Installing Fax Board)
Broadcast Transmission - - - - -	-Maximum 400 Destinations Per Job (Including Fax Numbers)
Message Size Limitation - - - - -	-Maximum 30 MB

Message Division - - - - -	-Page by Page
Special Features - - - - -	-On Ramp Gateway, Incoming Routing (Send-to-File, Send-to-Email, Send-to-Internet Fax, Multiple Agents for mailbox), Off Ramp Gateway
Acceptable Format - - - - -	-TIFF-S, TIFF-F, TIFF-J, TIFF-FX
Receive Method - - - - -	-SMTP, POP

Fax Kit GD1150 Specifications (Option)

Image Format on PSTN - - - - -	-JBIG, MMR, MR, MH
Resolution - - - - -	-Standard (200 x 100 dpi), Fine (200 x 200 dpi), Super Fine (200 x 400 dpi), Ultra Fine (400 x 400 dpi)
Document Size - - - - -	-A5-R/Statement-R to A3/Ledger
Compatibility - - - - -	-Super G3, G3
Modem Speed - - - - -	-33.6 Kbps to 2.4 Kbps (Automatic Fallback)
Communication Protocols - - - - -	-ITU-TT.30
Transmission Features - - - - -	-Direct Transmission, Memory Transmission, Delayed Transmission, Quality Transmission (Low Speed Transmission), Relay Transmission (F-code), Recovery Transmission: (Maximum 24 Hours), Priority Transmission, Busy Transmission, Batch Transmission

Paper Handling Options

Reversing Automatic	
Document Feeder MR3015	
Stack Capacity: - - - - -	-100 Sheets A5-R to A3: 80 g/m2 Statement-R to Ledger: 22 lbs.
Original Setting: - - - - -	-Face up
Original Paper Size: - - - - -	-A5-R/Statement-R to A3/Ledger
Original Paper Weight: - - - - -	-Simplex 50-127 g/m2 (13-33 lbs.) Duplex 50-105 g/m2 (13-28 lbs.)
Dimensions (W x D x H): - - - - -	-557mm x 530mm x 165mm (21.9" x 20.9" x 6.5")
Weight: - - - - -	-13.6 kg (30 lbs)

SPECIFICATIONS

Paper Feed Pedestal (PFP) KD1011

Paper supply: -----Maximum 550 Sheets
(80 g/m2.22 lbs.)

Paper size: -----A5-R/Statement-R to
A3/Ledger

Paper weight: -----64-105 g/m2 [17-28 lbs]

Dimensions (W x D x H): -----530mm x 577mm x 320mm
(20.9" x 22.7" x 12.6")

Weight: -----21.5 kg (47.4 lbs.)

Drawer Module MY1021

Paper supply: -----Maximum 550 sheets
(80 g/m2, 22 lbs.)

Paper size: -----A5-R/Statement-R to
A3/Ledger

Paper weight: -----64-105 g/m2 (17-28 lbs.)

Dimensions (W x D x H): -----526mm x 569mm x 107mm
(20.7" x 22.4" x 4.2")

Weight: -----3.8 kg (8.4 lbs.)

Large Capacity Feeder (LCF) KD1012

Paper Supply: -----Maximum 2500 sheets
(80 g/m2.22 lbs.)

Paper Size: -----A4/Letter

Paper Weight: -----64-105 g/m2 (17-28 lbs.)

Dimensions (W x D x H): -----530 mm x 577 mm x 307.5 mm
(20.9" x 22.7" x 12.1")

Weight: -----27 kg (59.5 lbs.)

Finisher (Hanging Type) MJ1022 (only for e-STUDIO3511)

Trays: -----2 Trays

Upper Tray Capacity: -----200 Sheets
A4, B5, B5-R,
A4-R: 80 g/m2—LT, LT-R,
ST-R: 22 lbs.
140 Sheets (B4/LG)
100 Sheets (A3, FOLIO/
LD, COMP)

Lower Tray Capacity: -----700 Sheets
A4, B5, B5-R,
A4-R: 80 g/m2—LT, LT-R,
ST-R: 22 lbs.
490 Sheets
B4: 80 g/m2
LG: 22 lbs.
350 Sheets
A3, FOLIO: 80 g/m2
LD, COMP: 22 lbs.

Copy Size: -----A5-R/Statement-R to
A3/Ledger

Staple Position: -----1 Position

Staple Capacity: -----30 Sheets
A4, A4-R, B5: 80 g/m2
LT, LT-R: 22 lbs.
20 Sheets
B4: 80 g/m2
LG: 22 lbs.
15 Sheets
A3, FOLIO: 80 g/m2
LD, COMP: 22 lbs.

Dimensions (W x D x H): -----451mm x 539mm x 590mm
(17.8" x 21.2" x 23.2")

Weight: -----Approx. 17 kg (37.5 lbs.)

Finisher (Multi-Staple Type) MJ1023

Trays: -----2 Trays

Upper Tray Capacity: -----1,000 Sheets
A4, B5, A5-R: 80 g/m2
LT, ST-R: 22 lbs.
500 Sheets
A4-R, B4, A3, B5-R,
FOLIO: 80 g/m2
LT-R, LG, LD, COMP: 22 lbs.

Lower Tray Capacity: -----1,000 Sheets
A4, B5, A5-R: 80 g/m2
LT, ST-R: 22 lbs.
500 Sheets
A4-R, B4, A3, B5-R,
FOLIO: 80 g/m2
LT-R, LG, LD, COMP: 22 lbs.

Copy Size: -----A5-R/Statement-R to
A3/Ledger

Staple Position: -----Multi-Position (5 Kinds)

Staple Capacity: -----50 Sheets (A4, B5/LT)
30 Sheets (A3, B4, A4-R,
FOLIO/LD, LG, LT-R, COMP)

Dimensions (W x D x H): -----537mm x 657mm x 1086mm
(21.1" x 25.9" x 42.8")

Weight: -----39 kg (86 lbs.)

SPECIFICATIONS

Finisher (Saddle-stitch Type) MJ1024

Trays: ----- 2 Trays + Saddle-stitch Tray

Upper Tray Capacity: ----- 1,000 Sheets

A4, B5, A5-R: 80 g/m²

LT, ST-R: 22 lbs.

A4-R, B4, A3, B5-R, FOLIO:

80 g/m²

LT-R, LG, LD, COMP: 22 lbs.

Lower Tray Capacity: ----- 1000 Sheets

A4, B5, A5-R: 80 g/m²

LT, ST-R: 22 lbs.

500 Sheets

A4-R, B4, A3, B5-R, FOLIO:

80 g/m²

LT-R, LG, LD, COMP: 22 lbs.

Copy Size: ----- A5-R/Statement-R to

A3/Ledger

Staple Position: ----- Multi-Position (5 Kinds)

Staple Capacity: ----- 50 Sheets

A4, B5: 80 g/m²

LT: 22 lbs.

30 Sheets

A3, B4, A4-R, FOLIO:

80 g/m²

LD, LG, LT-R, COMP: 22 lbs.

Saddle-stitch Staple Capacity: -- 15 Sheets

A3, B4, A4-R: 80 g/m²

LD, LT-R: 22 lbs

Dimensions (W x D x H) ----- 649mm x 657mm x 1,086mm

(25.6" x 25.9" x 42.8")

Weight: ----- 70 kg (154.3 lbs.)

Hole Punch Unit MJ6004 (For MJ1023 and MJ1024 Finishers)

Type and Hole Location: - - - - - MJ6004 - 2 Holes (Pitch: 70mm, 2.8") or 3 Holes (Pitch: 108mm, 4.3")
*Hole Pattern Depends On Paper Size.

Dimensions (W x D x H): - - - - - 112mm x 617mm x 378mm (4.4" x 24.3" x 14.9")

Weight: - - - - - 9 kg (19.8 lbs.)

Other Options - - - - - Platen Cover KA3511, Key Counter MU-8/MU-10, Work Tray KK3511, Fax 2nd Line Board GD1160 Expansion Memory GC1180 (128 MB), Wireless LAN Adapter GN1010, PCI Slot GO1030, Scrambler Board GP1030

SPECIFICATIONS

Working together for the planet

Reflecting our commitment to environmental protection, Toshiba champions the creation of products whose ecological impact through their life cycle is kept to a minimum. For example, the e-STUDIO3511/4511 is compliant with the "Energy Star®" energy saving requirements of the U.S. Environmental Protection Agency (EPA). The unit offers Energy Saver modes and a Sleep Mode to reduce power consumption when not in use, as well as paper saving features. Toshiba printed circuit boards are 100% free of lead and halogen materials, about half of recycled plastic parts by weight is halogen free, and Chromium VI reduction is also achieved for steel plates and screws. In addition, the e-STUDIO3511/4511 is designed for lower noise and reduced ozone emissions.

Toshiba is also committed to environmentally responsible manufacturing facilities and practices. To date, one copier sales affiliate and four Toshiba manufacturing facilities have been awarded ISO 14001 certification, the internationally recognized standard for environmental management systems that minimize the ecological impact of business activities. As a Toshiba customer, you play an active role in Toshiba's environmental efforts. Let's work together for the sake of our shared habitat.

Corporate Office

2 Musick, Irvine, California 92618-1631

East Coast

959 Route 46 East, 5th Floor
Parsippany, New Jersey 07054
Tel. (973) 316.2700 Fax (973) 263.2393

Midwest

8770 W. Bryn Mawr Avenue, Suite 700
Chicago, Illinois 60631
Tel. (773) 380.6000 Fax (773) 380.8077

South

4855 Peachtree Industrial Blvd., Suite 210
Norcross, Georgia 30092-3024
Tel. (770) 209.8540 Fax (770) 209.8556

West Coast

142 Technology, Suite 150
Irvine, California 92618
Tel. (949) 462.6262 Fax (949) 462.2700

Web Site

www.copiers.toshiba.com or
www.fax.toshiba.com

©2004 Toshiba America Business Solutions, Inc.
Electronic Imaging Division

Designs and specifications subject to change without notice. For best results and reliable performance, always use supplies manufactured or designated by Toshiba. Not all options and accessories may be available at the time of product launch. Please contact a local Authorized Toshiba Dealership for availability. Toner yields are estimates, based on 6% coverage, letter-size page. Driver and connectivity feature support varies by client/network operating system.

TOSHIBA